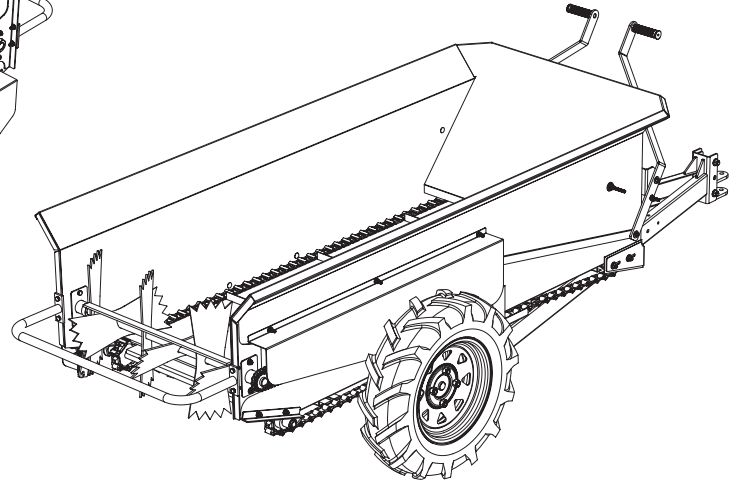
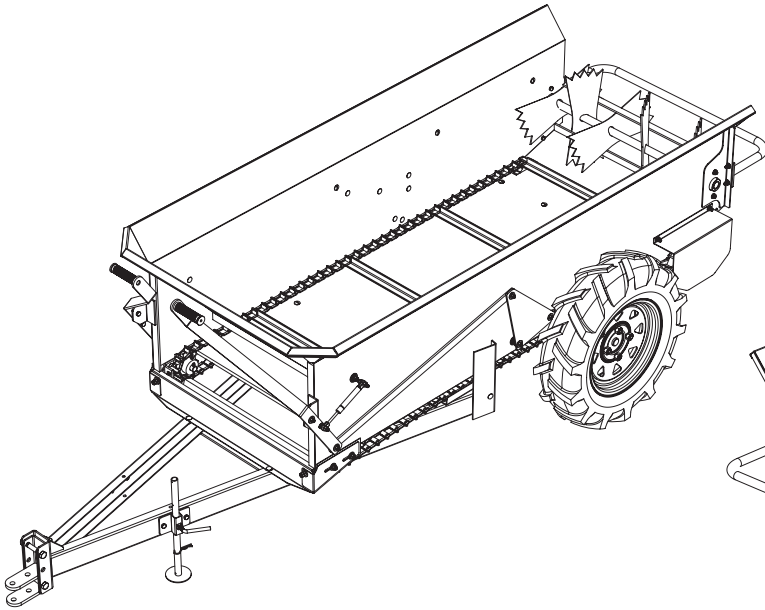


5301194  
MODEL: MS-25BU  
25 BUSHEL MANURE SPREADER

ASSEMBLY / OPERATION INSTRUCTIONS / PARTS



**ATTENTION**

FOR YOUR SAFETY, PLEASE READ THE ENTIRE MANUAL BEFORE USING THE SPREADER. THIS MANUAL CONTAINS DETAILED INSTRUCTIONS ON THE PROPER MAINTENANCE AND OPERATING PROCEDURES FOR OPTIMAL USE OF THE MANURE SPREADER.

**GENERAL INFORMATION**

The purpose of this manual is to assist you in operating and maintaining your manure spreader. Please read it carefully as it furnishes information that will help you achieve years of dependable trouble free operation.

**WARRANTY / PARTS / SERVICE**

Products are warranted for one year from date of purchase against manufacturer or workmanship defects.

Your authorized dealer is the best source of replacement parts and service. To obtain prompt, efficient service, always remember to give the following information:

1. Correct part description and part number.
2. Model Number.
3. Serial Number.

Part description and part numbers can be obtained from the illustrated parts list section of this manual.

Whenever you need parts or repair service, contact your distributor / dealer first. For warranty work always take your

original sales slip, or other evidence of purchase date, to your distributor / dealer.

**GENERAL MAINTENANCE**

Do not attempt, under any circumstance, to work with the chain drive mechanisms while the spreader is moving. To clean, service, adjust, unclog, or any other function, the spreader must be stationary. (Even though it would appear to be safe.) If the mechanism starts to move, your safety could be at risk. Follow these steps before attempting to maintain or repair any part of the spreader.

1. Unhitch the spreader from the towing vehicle.
2. Block both wheels front and back or raise the entire spreader. Support the spreader so the wheels may turn if necessary. Use care to provide adequate stationary support.
3. Engage the control levers only to move the drive chain mechanism.
4. Always be sure the safety guards are in place after maintenance and before moving the spreader.



WWW.FIMCOINDUSTRIES.COM

1000 FIMCO LANE • P.O. BOX 1700 • NO. SIOUX CITY, SD 57049  
TOLL FREE: 800-831-0027 • TOLL FREE FAX: 800-494-0440  
Form No. 708 (5004582 6/06) Printed In U.S.A.

5. Oil the roller chain and detachable chain once a week or as use and weather conditions demand. Do not let the chains go dry.
6. Grease the bushings for the axle shafts, the shafts for the rotary, blades, and the shaft for the detachable chain drive.
7. Cleaning the spreader after each use will prolong its life and make the maintenance easier.

### ASSEMBLY INSTRUCTIONS

1. Remove all parts of the manure spreader from the crate.
  - A. Note that the tongue is fastened to the crate. Free the tongue parts from the crate and then remove the top cross boards.
  - B. The wheels and tires may be lifted from the unit frame.
  - C. Note the small parts bag with the wheels, open it, and remove the contents.
2. Attach the tongue to the main frame using (4) carriage screws 5/16 - 18NC x 3/4" and (4) 5/16" whiz lock nuts. You may want to refer to the exploded view drawing.
3. The control levers must be attached to the bolt on each side near the front of the frame. The lock nuts are already attached to the appropriate parts. Remove them, affix the parts in place, and secure the parts with the lock nuts. Use a 5/16" lock nut to hold the control levers in place. Tighten the lock nut so that the levers may pivot easily, but with a minimum of play. You can now join the gas shock (Item 84) to the lever on the left front end using a 5/16" lock nut.
4. Place the manure spreader onto a platform at least 12" from the ground. Use a front end loader or a jack to raise the spreader safely.
  - A. Note there are right and left wheels. The tread should point to the rear as viewed from top of the tire.
  - B. Each wheel is to be attached using (4) bolts (Item 38) and (4) Wheel Nuts (Item 7).

### PARTS INCLUDED IN CRATE

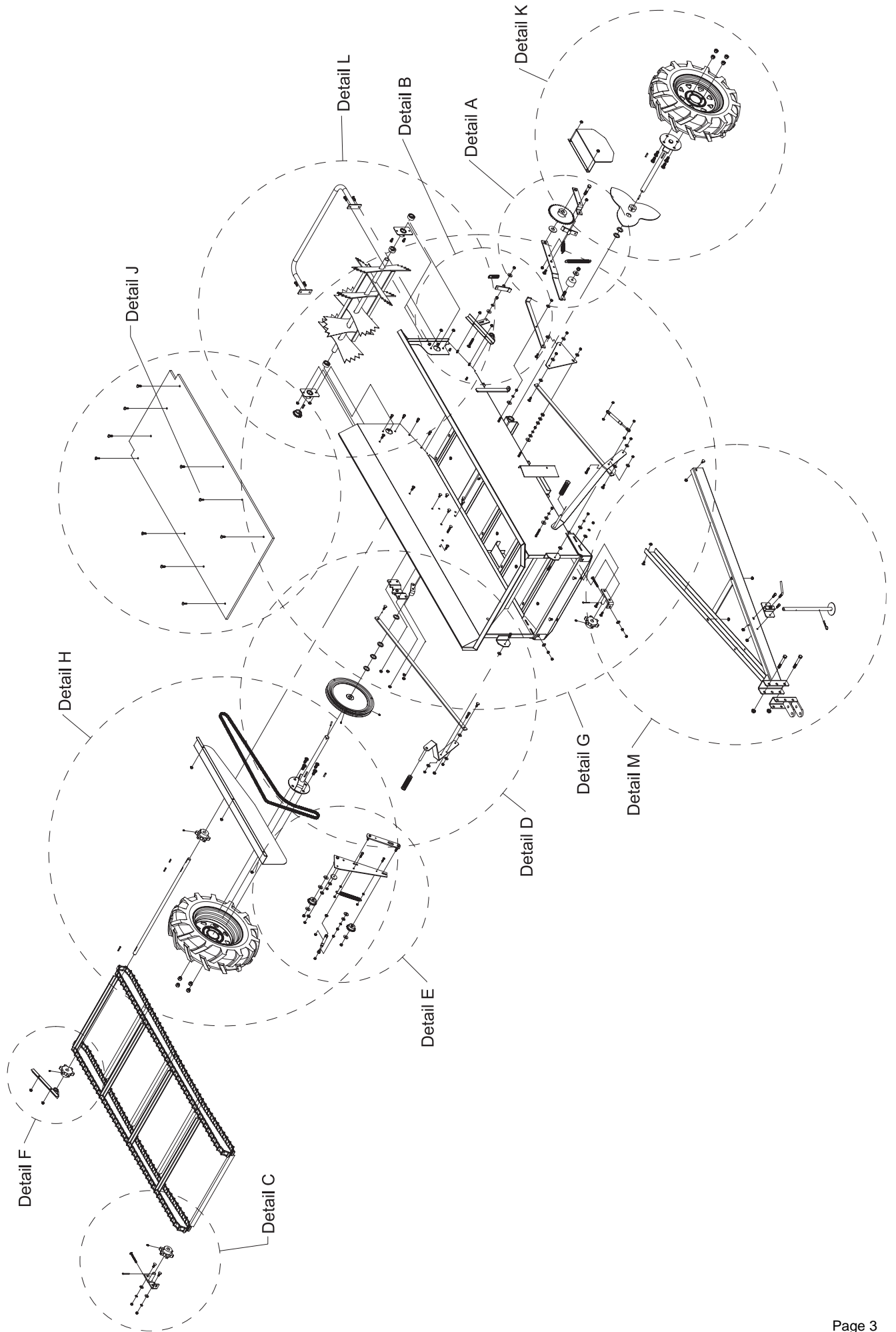
1. Main Frame Assembly
2. Tongue and Hitch Assembly
3. (2) Wheels And Tires
4. Small Parts Bag
  - A. (4) Carriage Screw, 5/16" - 18 NC x 3/4"
  - B. (4) Hex Whiz Lock Nut, 5/16"
  - C. (8) Wheel Bolts
  - D. (8) Wheel Nuts
  - E. (1) Gas Cylinder Shock

### OPERATING INSTRUCTIONS

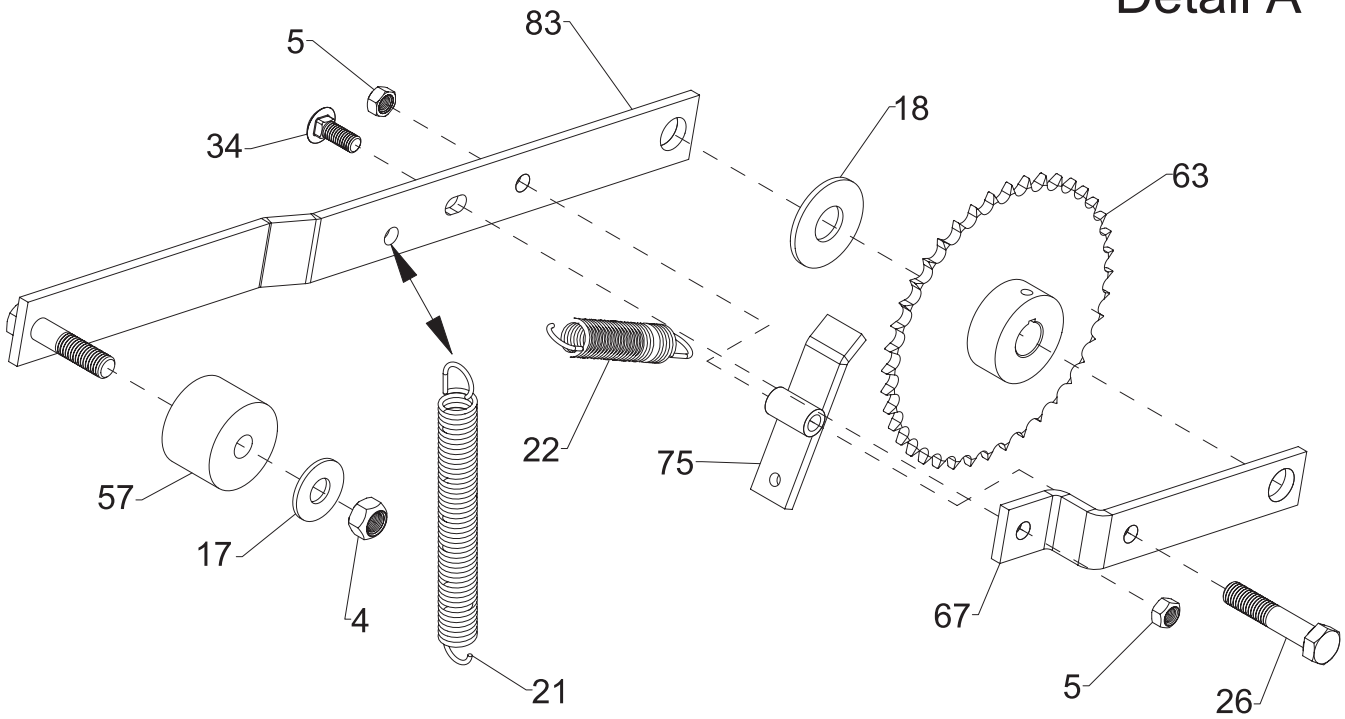
1. The towing vehicle should be at least of a 10 H.P. variety.
2. The spreader has an adjustable hitch. Set the hitch so the spreader is level when attached to the towing vehicle. The adjustable hitch range is from 7" - 16".
3. Be sure the towing vehicle can not move when attempting to hitch up to the spreader.
4. Use a quality hitch pin equipped to prevent accidental unhitching.
5. Be sure the safety guards are in place.
6. The control levers should be in the "off" position (rotated downwards) until you are ready to spread manure. Be sure to stop before engaging the controls
7. Begin loading to the front end of the spreader and gradually work to the rear end.
8. Do not load above the side or front panels.
9. Always allow clearance for the rotary blade mechanism to turn freely before engaging the chain mechanism.
10. It is important to free up any manure that may be frozen or adhered to the floor. This will prolong the life of the drive chain. It is also a good idea to know that the detachable chain mechanism (slide bar) is not adhered to the floor board. This can happen in cold weather when moisture freezes to the chain and floor.
11. Stop moving before engaging or disengaging the controls to the chain drive mechanisms.
12. The proper speed for the desired spreading is from 3 1/2 - 5 M.P.H. Do not exceed 5 M.P.H. or excessive wear and tear will occur.
13. Always disengage both controls before backing up. Reversing the chain drive mechanism will cause damage to the drive mechanism.
14. It is a good idea to use a slow moving vehicle sign for road travel.
15. Use safe practices when operating the spreader. Better to be safe than sorry.
16. Cleaning the spreader after each use will prolong the life of the spreader and make maintenance easier
17. Be sure to oil the roller chain as well as the detachable chain, and grease the axle and the pivoting shaft bushings for the rotary blades and the detachable chain. A regular practice of maintenance will prolong the life of the spreader.
18. Raise the control levers to engage the ground drive mechanisms.

# Overall Exploded View

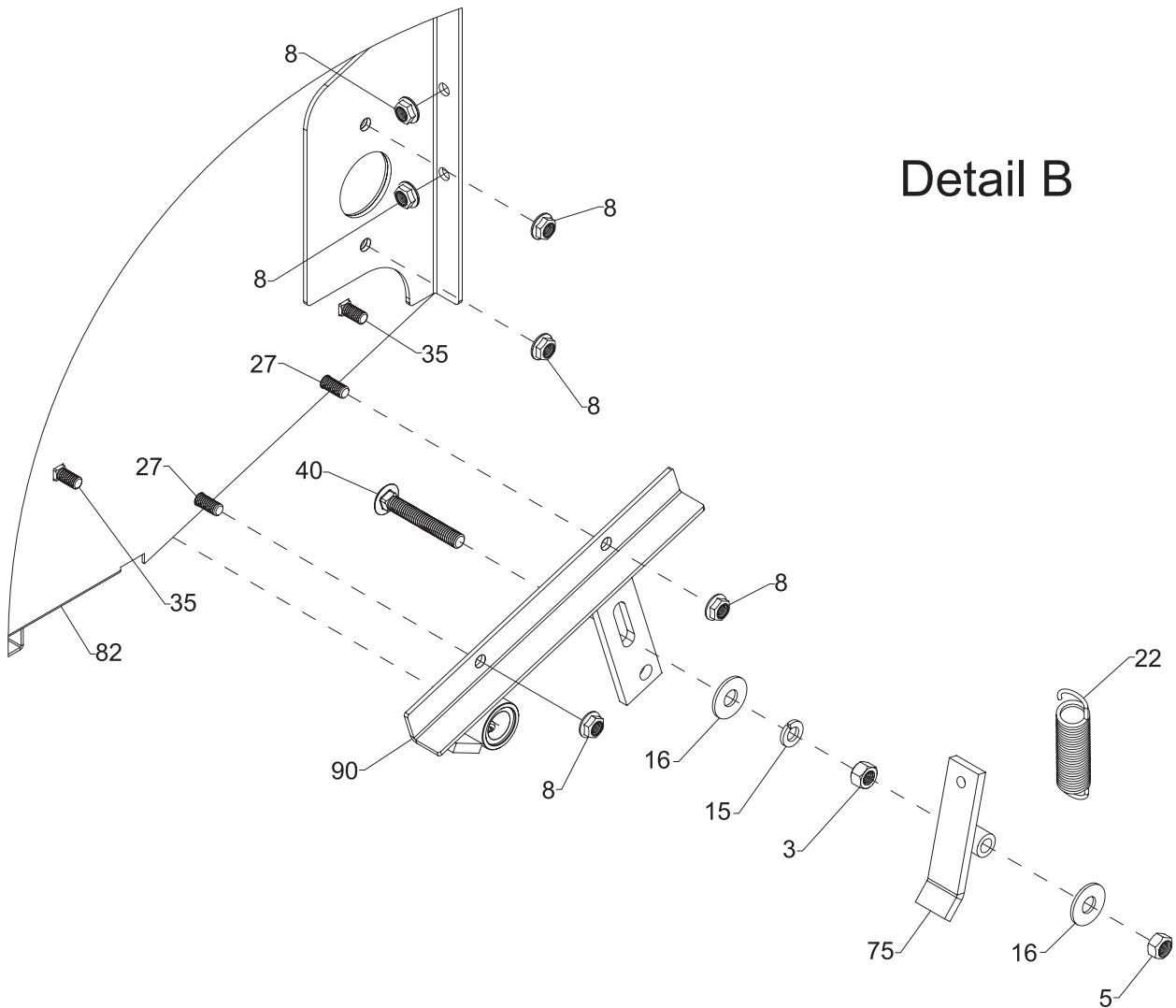
Refer to all detail views for parts call-out and notes.



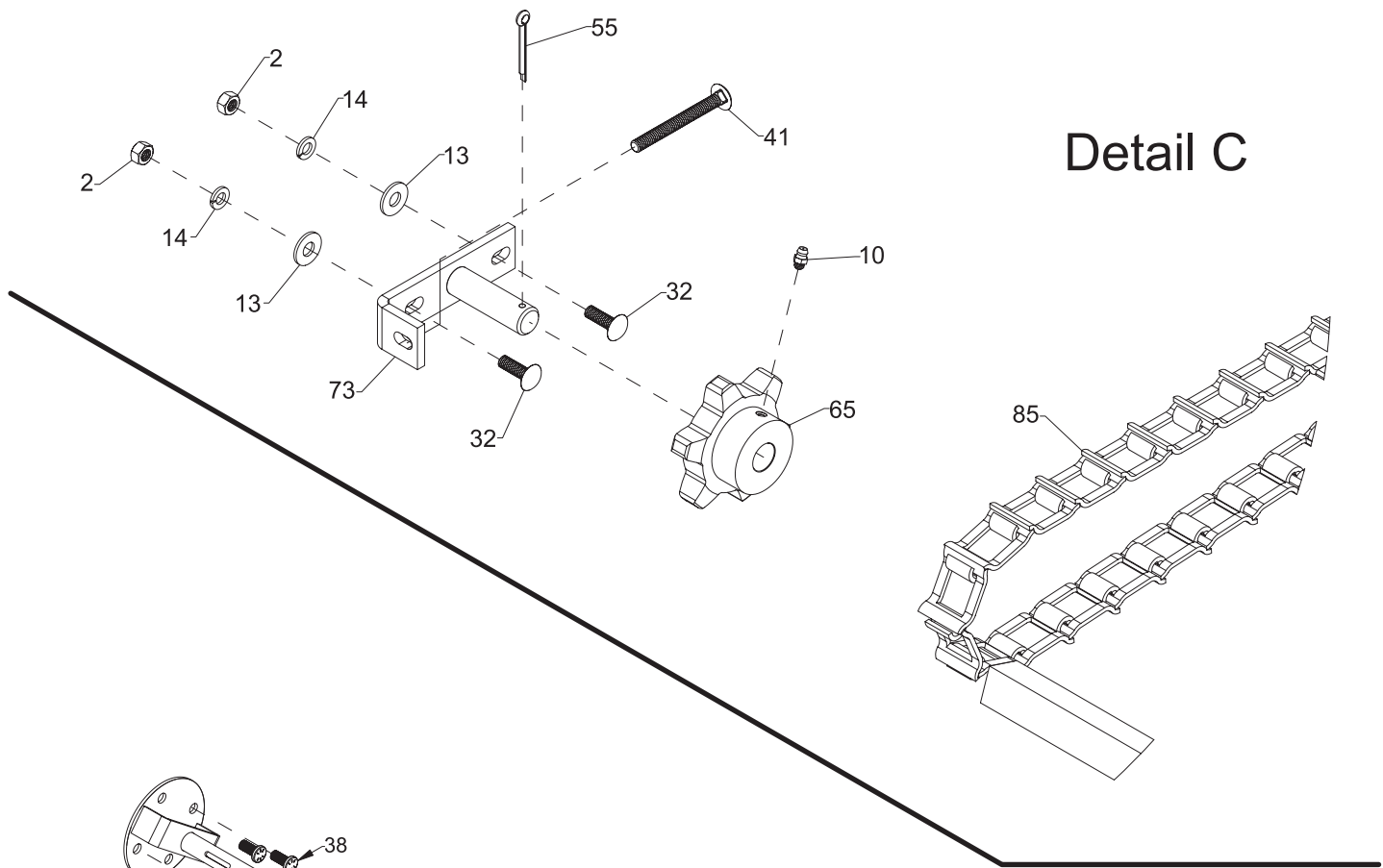
# Detail A



# Detail B

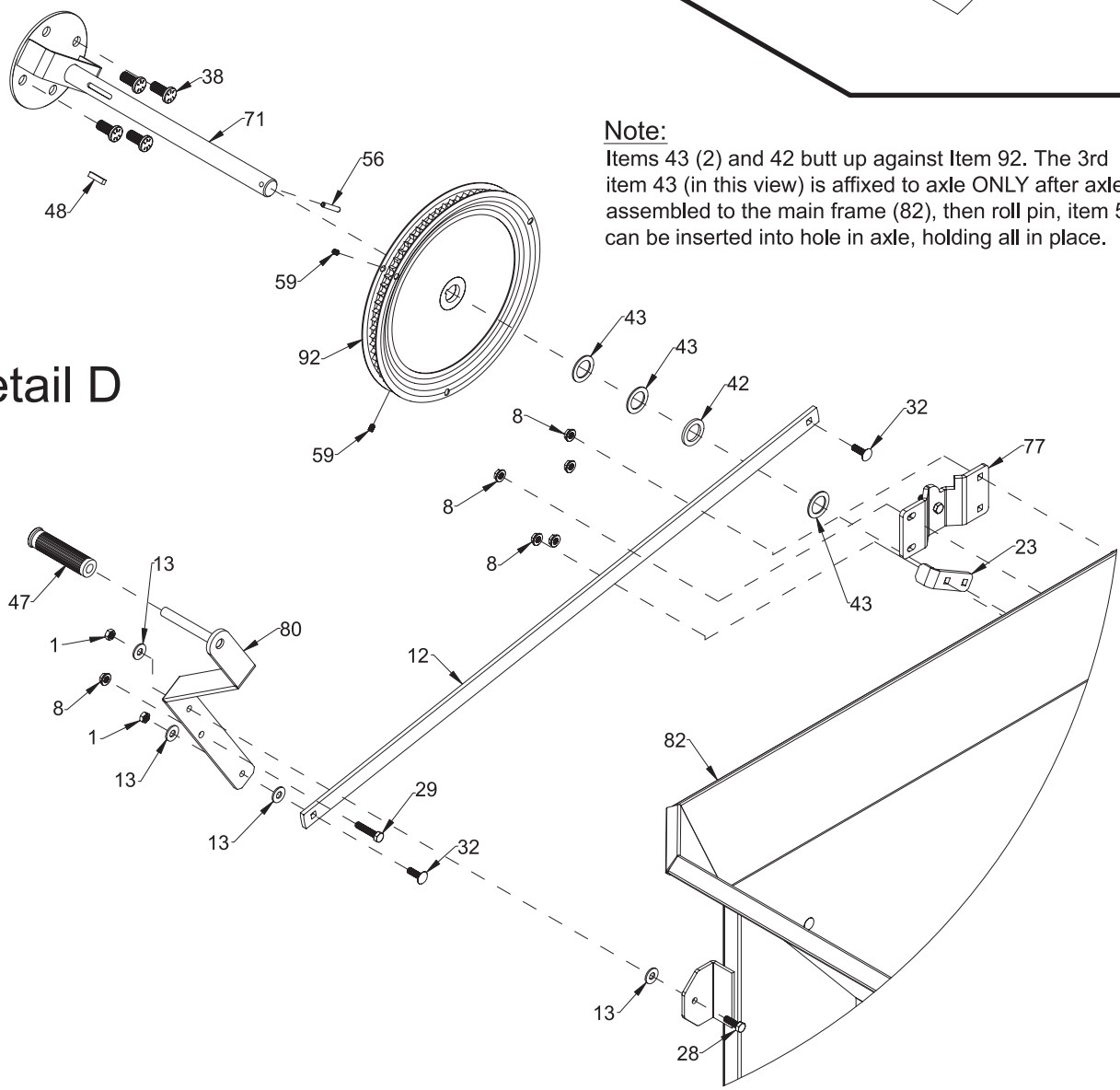


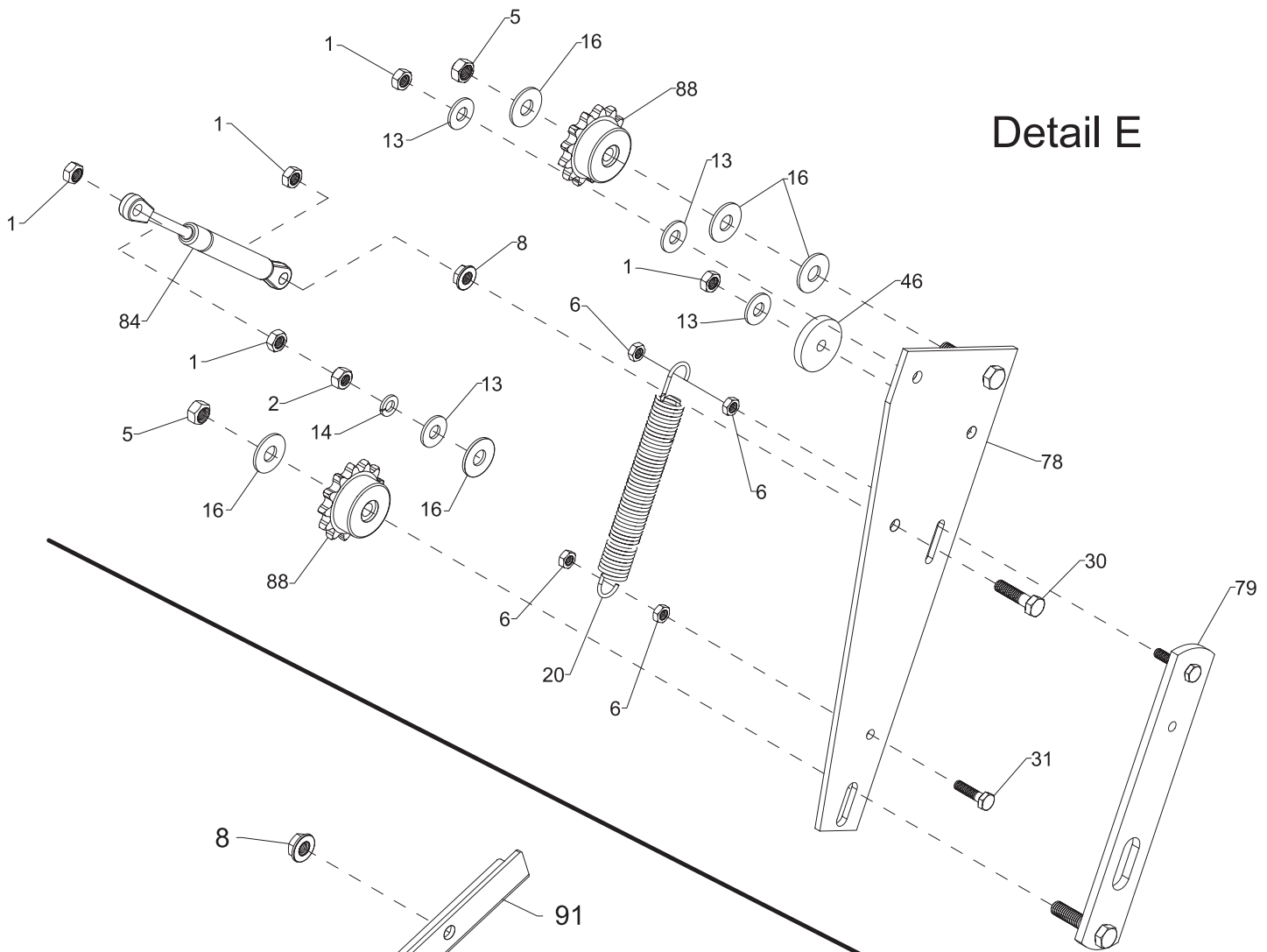
# Detail C



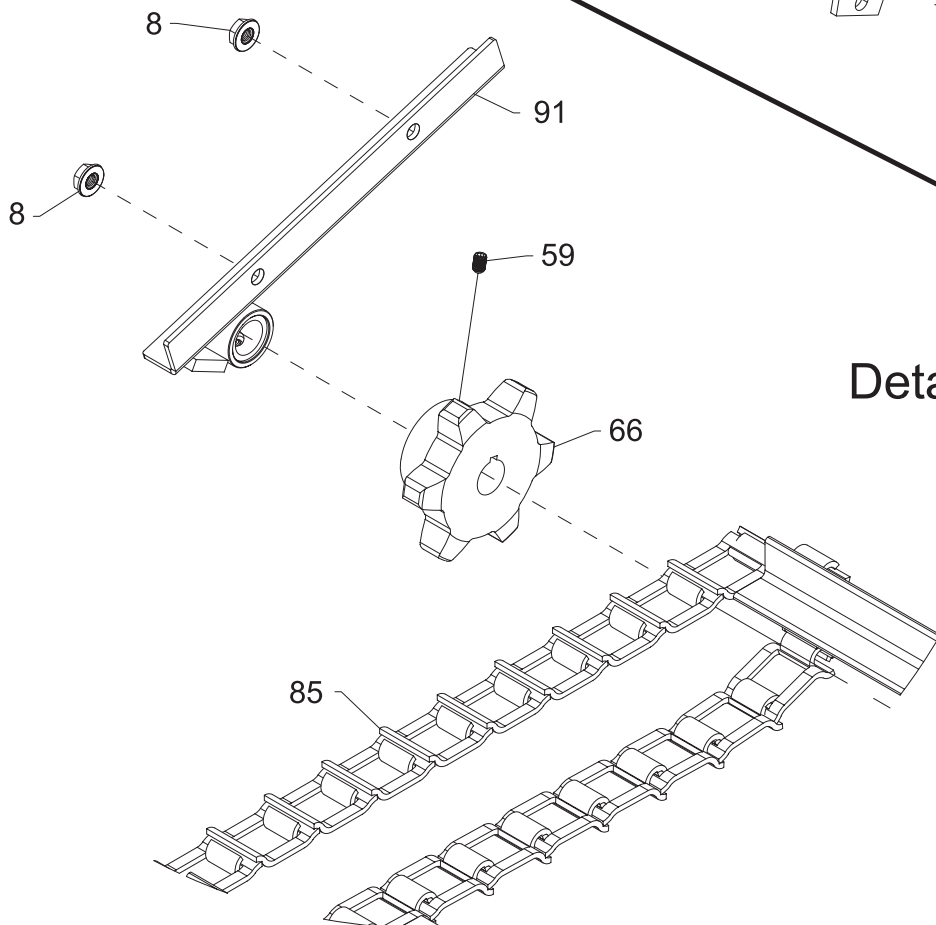
**Note:**  
 Items 43 (2) and 42 butt up against Item 92. The 3rd item 43 (in this view) is affixed to axle ONLY after axle is assembled to the main frame (82), then roll pin, item 56, can be inserted into hole in axle, holding all in place.

# Detail D



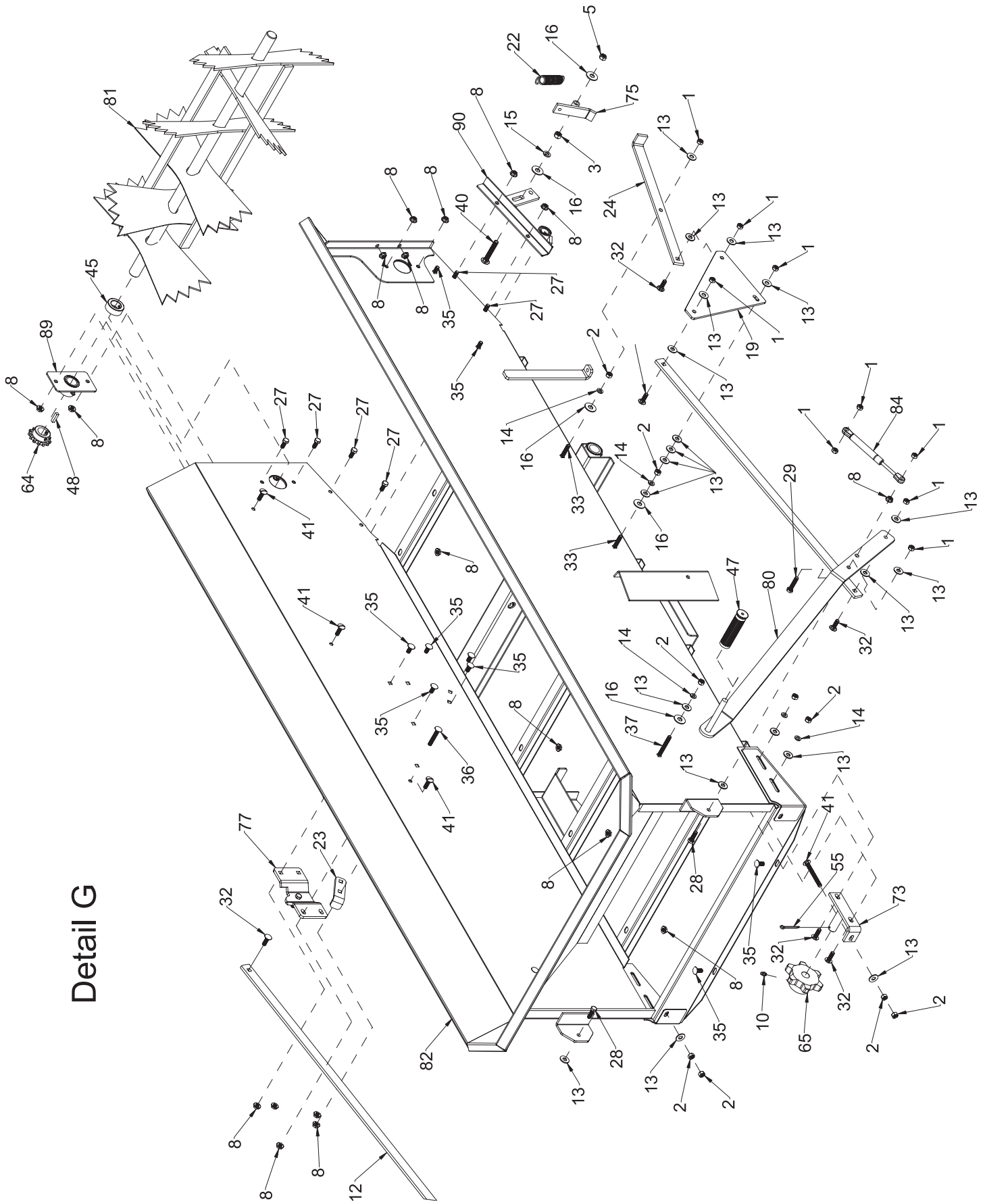


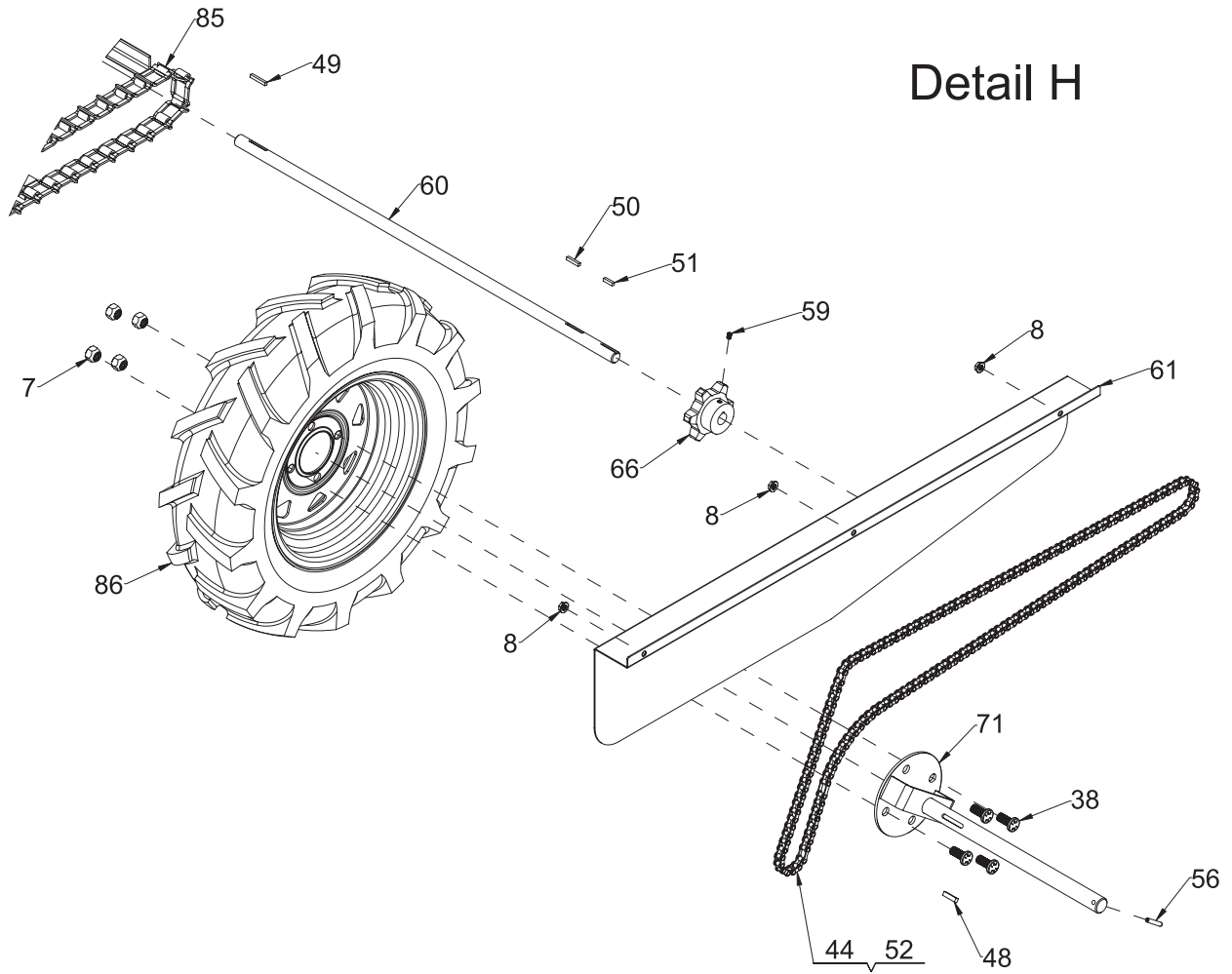
Detail E



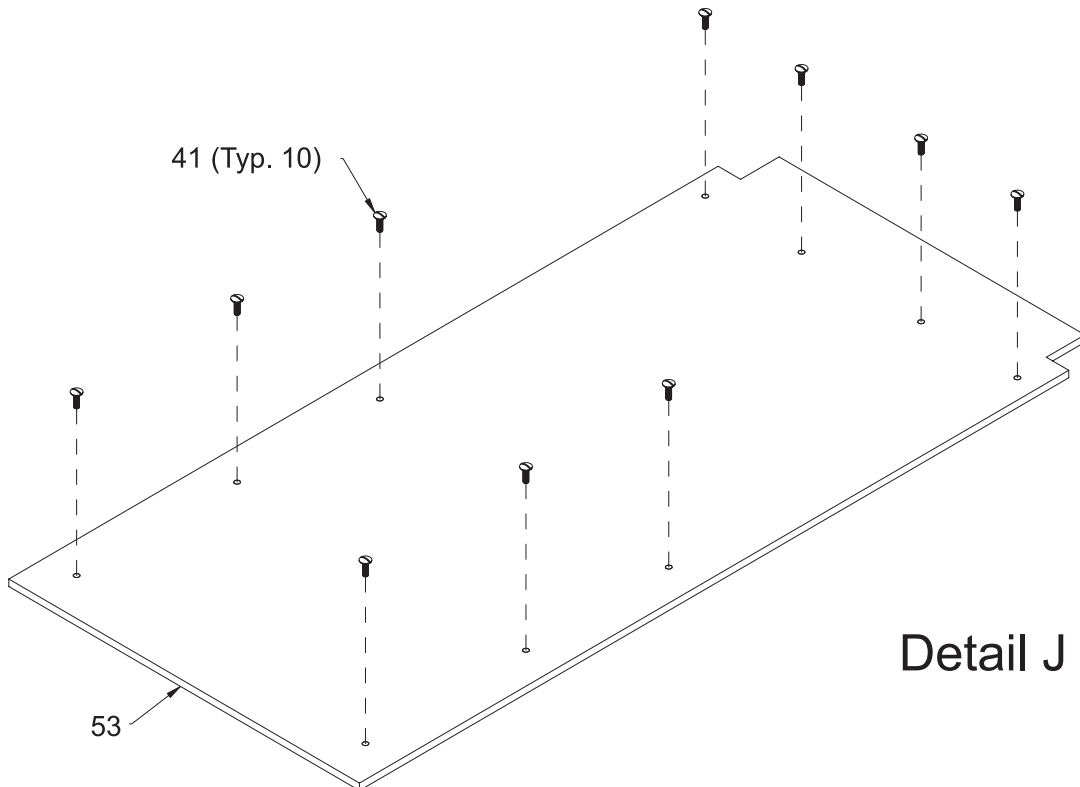
Detail F

# Detail G





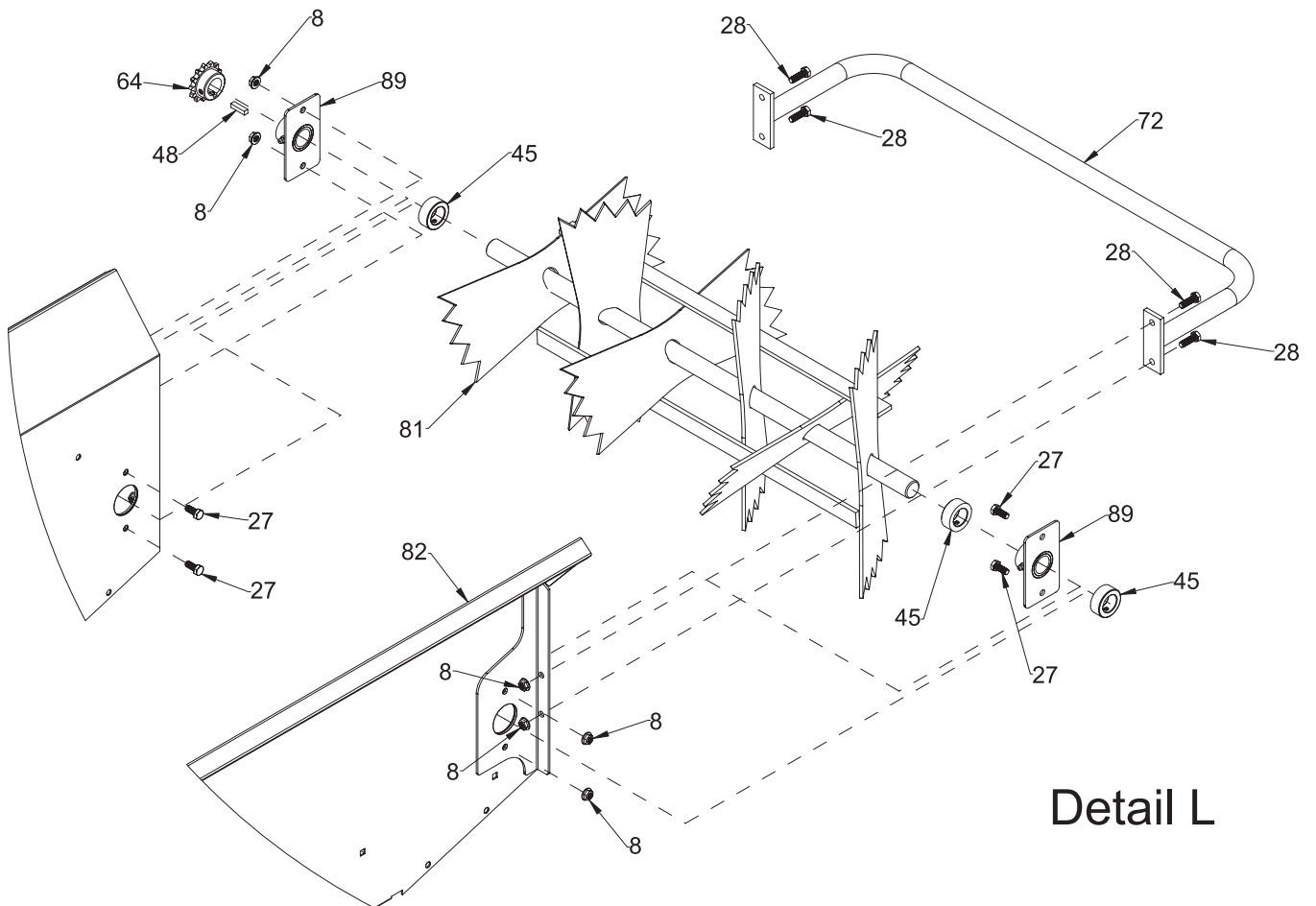
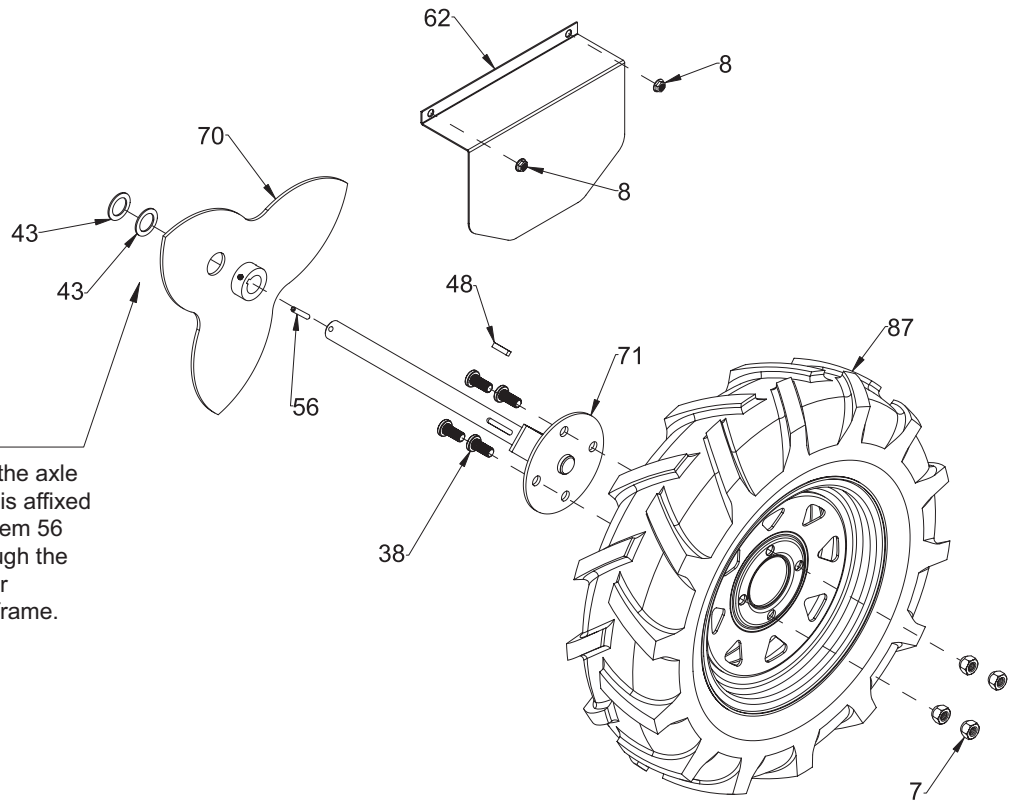
Detail H



Detail J

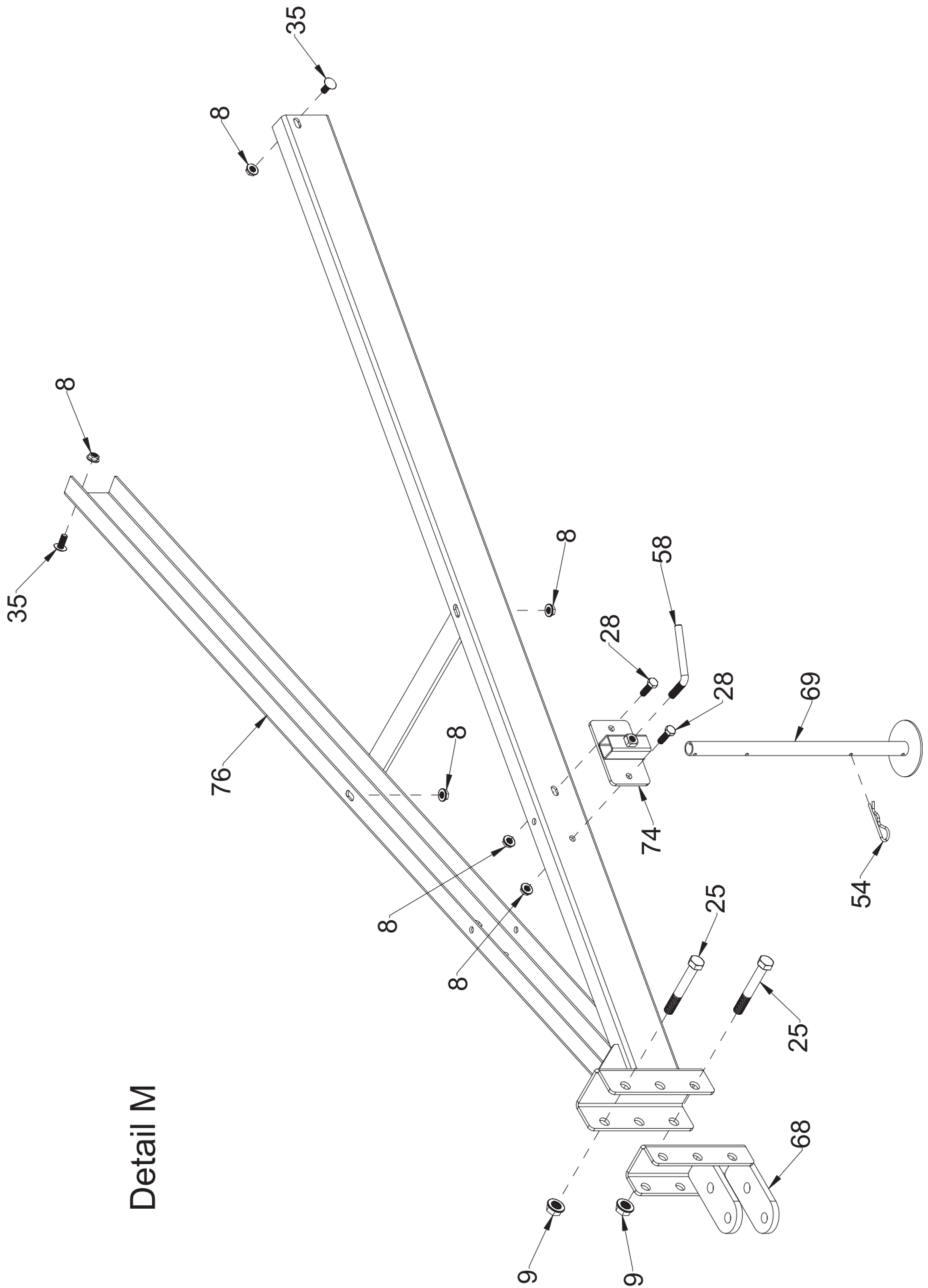
# Detail K

Note:  
 Items 43 (2) affix to the axle  
 ONLY after the axle is affixed  
 to the main frame. Item 56  
 (Roll Pin) goes through the  
 hole in the axle, after  
 assembled to main frame.



# Detail L

# Detail M



## Repair Parts List: MS-25BU (Manure Spreader)

Item No	Part Number	Qty	Description	List Price
1	5006035	16	5/16"-18 Hex Locknut	.50
2	5006040	13	5/16"-18 Hex Nut	.25
3	5006054	1	3/8"-16 Hex Nut	.25
4	5006091	1	1/2"-13 Hex Locknut	.25
5	5006092	5	3/8"-16 Hex Locknut	.25
6	5006160	4	1/4"-20 Hex Locknut	.25
7	5006301	8	1/2"-20 Hex Cone Wheel Nut	.50
8	5006307	41	5/16"-18 Hex Whiz (Flange) Locknut	.09
9	5006337	2	1/2"-13 Hex Whiz (Flange) Locknut	.17
10	5012015	6	Grease Zerk, 1/4"-28 Thread	.45
11	5015144	1	Linkage Rod (Left Side)	6.44
12	5015145	1	Linkage Rod (Right Side)	6.70
13	5016020	30	Flatwasher, 5/16"	.25
14	5016026	9	Lockwasher, 5/16"	.25
15	5016027	1	Lockwasher, 3/8"	.25
16	5016030	11	Flatwasher, 3/8"	.25
17	5016031	1	Flatwasher, 1/2"	.25
18	5016160	1	Flatwasher, 3/4"	.35
19	5017808	1	Pivot Plate	4.95
20	5019254	1	Extension Spring	4.14
21	5019255	1	Spring, 6"	4.71
22	5019256	2	Spring, 3"	2.88
23	5022386	1	Stop Angle	6.27
24	5023095	1	Trip Arm	5.65
25	5034022	2	H.H.C.S., 1/2"-13 x 3 1/2"	.44
26	5034036	1	H.H.C.S., 1/2"-13 x 2 1/2"	.44
27	5034038	8	H.H.C.S., 5/16"-18 x 3/4"	.55
28	5034042	8	H.H.C.S., 5/16"-18 x 1"	.44
29	5034069	2	H.H.C.S., 5/16"-18 x 1 1/2" (Full Thread)	.25
30	5034076	1	H.H.C.S., 5/16"-18 x 1 1/4"	.44
31	5034083	1	H.H.C.S., 1/4"-20 x 1"	.44
32	5034448	9	Carriage Bolt, 5/16"-18 x 1"	.13
33	5034477	2	Carriage Bolt, 5/16"-18 x 1 1/2" (Full Thread)	.15
34	5034482	1	Carriage Bolt, 3/8"-16 x 1"	1.00
35	5034534	11	Carriage Bolt, 5/16"-18 x 3/4"	.10
36	5034536	1	5/16"-18 x 2" Carriage Bolt	.20
37	5034538	2	Carriage Bolt, 5/16"-18 x 2 1/2"	.23
38	5034540	8	Serrated Shoulder Bolt, 1/2"-20 N.F. x 1 1/8"	1.60
41	5034541	13	5/16"-18 x 1" Slotted Truss Head Machine Screw	.15
40	5034544	1	Carriage Bolt, 3/8"-16 x 2 1/2" (Full Thread)	.40
41	5034550	2	Carriage Bolt, 5/16"-18 x 3" (Full Thread)	.31
42	5041113	1	Machinery Bushing, 1 1/2" O.D. x 1" I.D. x 10 Ga.	.53
43	5041122	5	Machinery Bushing, 1 1/2" O.D. x 1" I.D. x 14 Ga.	.50
44	5049053	1	#40 Roller Chain x 84"	12.85
45	5055044	3	Steel Set Collar (1" Bore, 5/8" Width, 1 5/8" O.D.)	1.46
46	5063254	1	Disc	1.31
47	5078180	2	Handle Grip	1.20

Item No	Part Number	Qty	Description	List Price
48	5089047	3	1/4" Square Keystock x 1" Long	.50
49	5089051	1	3/16" Square Keystock x 1 1/4" Long	.50
50	5089052	1	3/16" Square Keystock x 1" Long	.50
51	5089053	1	3/16" Square Keystock x 3/4" Long	.40
52	5094017	1	Master Link	.84
53	5099046	1	Floor Panel (Manure Spreader)	100.00
54	5101065	1	Hitch Pin Clip, (Hair-Pin Cotter 0.120")	.40
55	5101207	2	Cotter Pin, 5/32" x 1 3/4"	.10
56	5101248	2	Roll Pin, 1/4" Dia. x 1 1/2"	.50
57	5112034	1	Cam Roller	5.43
58	5117259	1	Handle Screw	3.01
59	5117298	5	1/4"-28 x 3/8" Socket-Head Set Screw	.30
60	5118189	1	Floor Chain Shaft (Rear)	32.16
61	5120054	1	Right Side Shield	12.45
62	5120055	1	Left Side Shield	5.60
63	5130008	1	#40 x 40 Tooth Sprocket	40.61
64	5130010	1	Sprocket (w/Set Screws)	18.00
65	5130012	2	Feed Chain Idler Sprocket	19.00
66	5130013	2	Feed Chain Drive Sprocket	22.50
67	5133252	1	Sprocket Retainer Strap	5.32
68	5273204	1	Hitch Clevis Weldment	23.44
69	5274436	1	Parking Stand Weldment	10.10
70	5274623	1	Hub-to-Cam Weldment	31.42
71	5274624	2	Axle Weldment	28.31
72	5274625	1	Bumper Weldment	20.00
73	5274626	2	Floor Chain Tensioner Weldment	13.24
74	5274627	1	Stand Receiver Weldment	10.36
75	5274629	2	Ratchet Pivot Weldment	8.83
76	5274633	1	Tongue Weldment	78.02
77	5274634	1	Riser Plate Sub-Weldment	7.02
78	5274635	1	Slide Mount Plate Weldment	9.10
79	5274636	1	Slide Bar Weldment	9.01
80	5274637	2	Handle Weldment	17.14
81	5274640	1	Paddle Shaft Weldment	102.06
82	5274641	1	Main Frame Weldment (Manure Spreader)	634.75
83	5274644	1	Cam Follower Weldment	12.09
84	5274648	2	Gas Shock Absorber Cylinder w/Eye End Fittings	24.66
85	5274649	1	Feeder Chain Weldment	146.70
86	5274652	1	(R.H.) 6.00-12 AG Tread (4-Ply Tubeless) Tire	100.00
87	5274655	1	(L.H.) 6.00-12 AG Tread (4-Ply Tubeless) Tire	100.00
88	5274656	2	Sprocket & Bushing Assembly	12.50
89	5274669	2	Bearing Housing Assembly	21.81
90	5274670	1	Lower Left Shaft Housing Assembly	32.37
91	5274671	1	Lower Right Shaft Housing Assembly	26.79
92	5274847	1	Sprocket-To-Chain Retainer Plate Weldment	93.97