



108681
Rolling Work Seat

12855



©2012 FarmTek®
All Rights Reserved. Reproduction
is prohibited without permission.

Revision date: 05.01.12

STK#	DIMENSIONS
108681	14" W x 31" L x 18" H



YOU MUST READ THIS DOCUMENT BEFORE YOU BEGIN TO ASSEMBLE THE WORK SEAT.

Thank you for purchasing this work seat. When properly assembled and maintained, this product will provide years of reliable service. These instructions include helpful hints and important information needed to safely assemble and properly maintain the work seat. Please read these instructions **before** you begin.

If you have any questions during the assembly, contact customer service for assistance.

SAFETY PRECAUTIONS

- Periodically check nuts and bolts to make sure they are tight and secure.
- Do not use the work seat if any part is broken or damaged.
- This work seat is not a toy. Do not let children use the work seat unsupervised.
- Do not use on inclines; work seat may tip or roll away.
- Do not load your work seat with more than 300lbs.
- Do not load the tool tray with more than 5lbs.
- Do not inflate the tires more than 30psi. Inflate with ambient air only.
- **Never use a flammable gas to inflate the tires.**

REQUIRED TOOLS

The following list identifies the main tools needed for assembly.



- Flat head screwdriver
- Phillips head screwdriver
- Metric wrench or socket set (or an small, adjustable wrench)
- Pliers

UNPACK AND IDENTIFY PARTS

The following steps will ensure that you have all the necessary parts before you begin to assembly.

1. Unpack the contents of the shipment and place where you can easily inventory the parts.
2. If anything is missing or you have questions, consult the Pictorial Parts List, or contact customer service.



PICTORIAL PARTS LIST

The following photos will help you identify the different parts.



10x15mm Flat Head Bolts (4)
10mm Washers (4)
10mm Nuts (4)



6x12mm Pan Head Bolts (4)
12mm Washers (4)
12mm Nuts (4)



Cotter Pins (5)



Flat Plates (2)



12x32mm Flat Washers (8)



Large Washer (1)



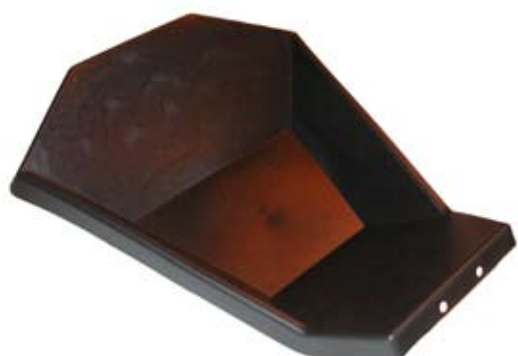
Wheels (4)



Axles (2)



Seat (1)



Tool Tray (1)



Frame (1)



108681 Rolling Work Seat

ASSEMBLY INSTRUCTIONS

1. Turn the frame upside down and attach the tool tray using the two (2) flat plates and 6x12mm pan head bolts, washers, and nuts. *Do not tighten the bolts at this time.*

NOTE: Set the seat aside on a surface that will not scratch or damage the finish. It is installed last.



2. Center the tool tray on the frame and tighten all 6x12mm bolts.

3. Slide the axles into the frame.



4. Slide one (1) wheel washer, one (1) wheel, and one (1) additional wheel washer onto each end of the axles. *Mount wheels with the valve stem to the outside of the work seat.*



ASSEMBLY INSTRUCTIONS (continued)

5. Insert a cotter pin into each pre-drilled hole on the axle. Using a pliers, spread the ends of the cotter pins and wrap ends tightly around the axles to secure the wheels.



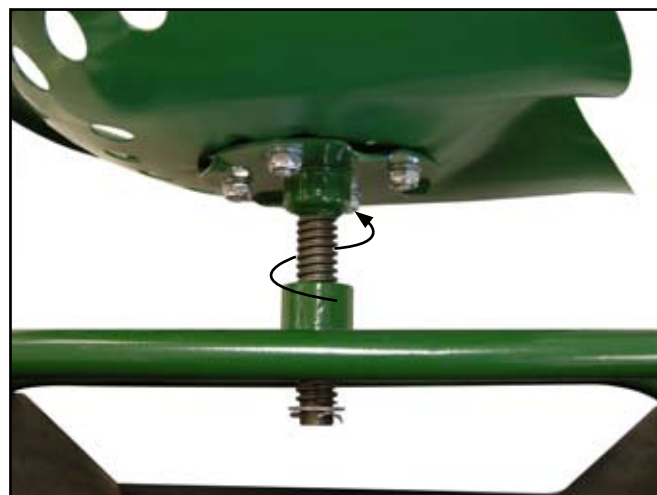
6. Place work seat frame on the wheels to attach the seat.



7. Attach the seat to the seat post using four (4) 10x15mm flat head bolts, washers, and nuts.



8. Thread the seat assembly onto the frame in a clockwise motion until the threaded post can be seen from under the work seat.



9. Secure the seat to the frame using the large washer and cotter pin. Using pliers, spread the ends of the cotter pin to secure the seat.

Seat height can be adjusted by rotating the seat clockwise or counter-clockwise.



MAINTENANCE

1. Periodically check all connections to ensure safe operation of work seat.
2. Periodically check air pressure in tires. *Do not overinflate. Ratings are found on tires.*