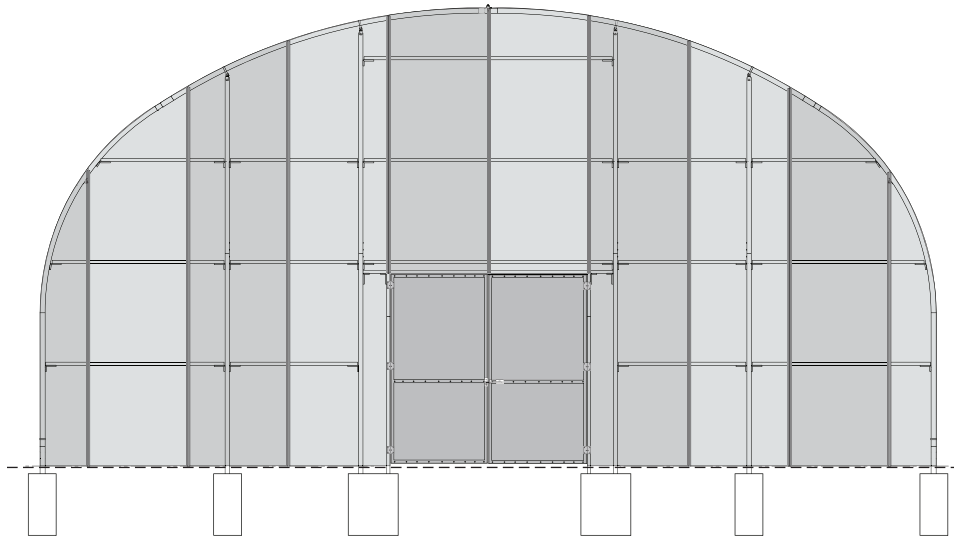




GrowSpan™ Series 500 Door Kits Double Swinging Door



Finished Grade Finished Grade
Diagram shows a double-swinging door centered and installed in an end wall frame.
The door kit includes materials for the door and tubing for the door frame only. All other components shown in the diagram above and other diagrams throughout this guide are not included and require additional purchase. Actual building width may differ.

©2023 GrowSpan
All Rights Reserved. Reproduction
is prohibited without permission.



WARNING: Cancer and Reproductive Toxicity - P65Warnings.ca.gov

STK# GS05KDR2SWT (Twin-Wall Polycarbonate) GS05KDR2SWC (Corrugated Polycarbonate)

Revision date: 04.24.23

Table of Contents

Important Information	3
Door Frame Assembly	5
Twin-Wall Double Swinging Doors.....	6
Corrugated Double Swinging Doors.....	9
Shelter Care and Maintenance	12
Quick Start Guide	13
Door Frame Layout.....	14
Door Frame Detail Connections.....	15

DOUBLE SWINGING DOOR KIT: READ THIS BEFORE YOU BEGIN

The double swinging door kit is designed to attach to any of these end frame kits: GS05KEW20G72, GS05KEW24G72, GS05KEW30G72 and GS05KEW35G72.

Install the end wall framing before you install the door frame. Consider the positions of fans, vents, and other accessories before you install the door frame.

Door must not block or interfere with the operation of building accessories.

If you are installing this door kit in an end frame that is not identified above, use these instructions for critical dimensions and details.

Consult the services of a qualified contractor if needed. *It is the responsibility of the owner/contractor to adapt these instructions to safely and competently install this door in an end frame or building that it was not designed for.*

Complete these steps to begin and to install the door:

1. Based on the dimensions of the door (or doors), determine where you can position the door in the end frame. Use the diagrams from both this manual and the end wall assembly guide.
2. Secure the door framing to the end wall framing.
3. Assemble door frame and door and attach to end wall.

NOTE: If you purchased a fabric end panel to cover the end wall frame, install the panel *before* you install the door; then remove the panel material as needed to allow for the installation of the door.

If you purchased a polycarbonate package (8 mm twin-wall or corrugated), install those panels after installing the door(s).

Important Information



YOU MUST READ THIS DOCUMENT BEFORE YOU BEGIN TO ASSEMBLE THE DOOR KIT.

Thank you for purchasing this GrowSpan™ door kit. When properly assembled and maintained, this product will provide years of reliable service. These instructions include helpful hints and important information needed to safely assemble and properly maintain the door. Please read these instructions **before** you begin.

SAFETY PRECAUTIONS

- Wear eye protection.
- Wear head protection.
- Use a portable GFCI (Ground Fault Circuit Interrupter) when working with power tools and cords.
- Do not climb on the framing during or after construction.
- Provide proper ingress and egress to prevent entrapment.

⚠ WARNING: The individuals assembling this door are responsible for designing and furnishing all temporary bracing, shoring and support needed during the assembly process.

For safety reasons, those who are not familiar with recognized construction methods and techniques must seek the help of a qualified contractor.

REQUIRED TOOLS

The following list identifies the main tools needed to assemble the door. *Additional tools and supports may be needed depending on the structure, location, and application.*

- Tape measure or measuring device
- Fine point marker to mark the location frame members.
- Wrench and socket and ratchet set that includes 1/2" size
- Variable speed drill (cordless with extra batteries works best)
- Tool to cut the polycarbonate panel
- Hammers, gloves, and eye protection
- Ladders, work platforms, and other machinery for lifting designed to work safely at the height of the door and door frame.

ATTENTION: Consult the services of a qualified, professional contractor if you are not familiar with the construction of similar frame structures and components.

Important Information

ASSEMBLY PROCEDURE

Following the instructions as presented will help ensure the proper installation of the end frame and door. The steps outlining the assembly process are as follows:

1. Verify that all parts are included in the shipment. Notify Customer Service for questions or concerns.
2. Read these instructions, the Must Read document, and all additional documentation included with the shipment **before** you begin.
3. Gather the tools, bracing, ladders (and lifts), and assistance needed to install the door and door frame.
4. Read the care and maintenance information at the end of these instructions.
5. Complete and return all warranty information as instructed (if present).

UNPACK AND IDENTIFY PARTS

The following steps will ensure that you have all the necessary parts *before* you begin.

1. Unpack the contents of the shipment and place where you can easily inventory the parts. Refer to the Bill of Materials/Spec Sheets.
2. Verify that all parts listed on the Bill of Materials/Spec Sheets are present. If anything is missing or you have questions, consult the parts guide and all diagrams for clarification, or contact customer service.

NOTE: At this time, you do not need to open the plastic bags containing smaller parts such as fasteners and clamps (if equipped).

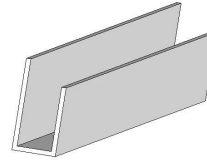
QUICK START DIAGRAMS

For a quick overview of the end wall, door, and components, consult the diagrams located at the back of these instructions.

PARTS IDENTIFICATION

The following graphics and photos will help identify the different hardware for each door. (Some parts are not shown.)

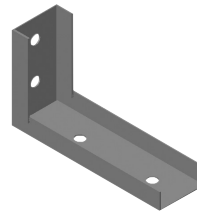
Typical Door Kit Components



104213
Aluminum
U-Channel Profile
(Twin Wall Kits only.)



102921B & FA4484B
Tek Screws and neo-
bonded washers



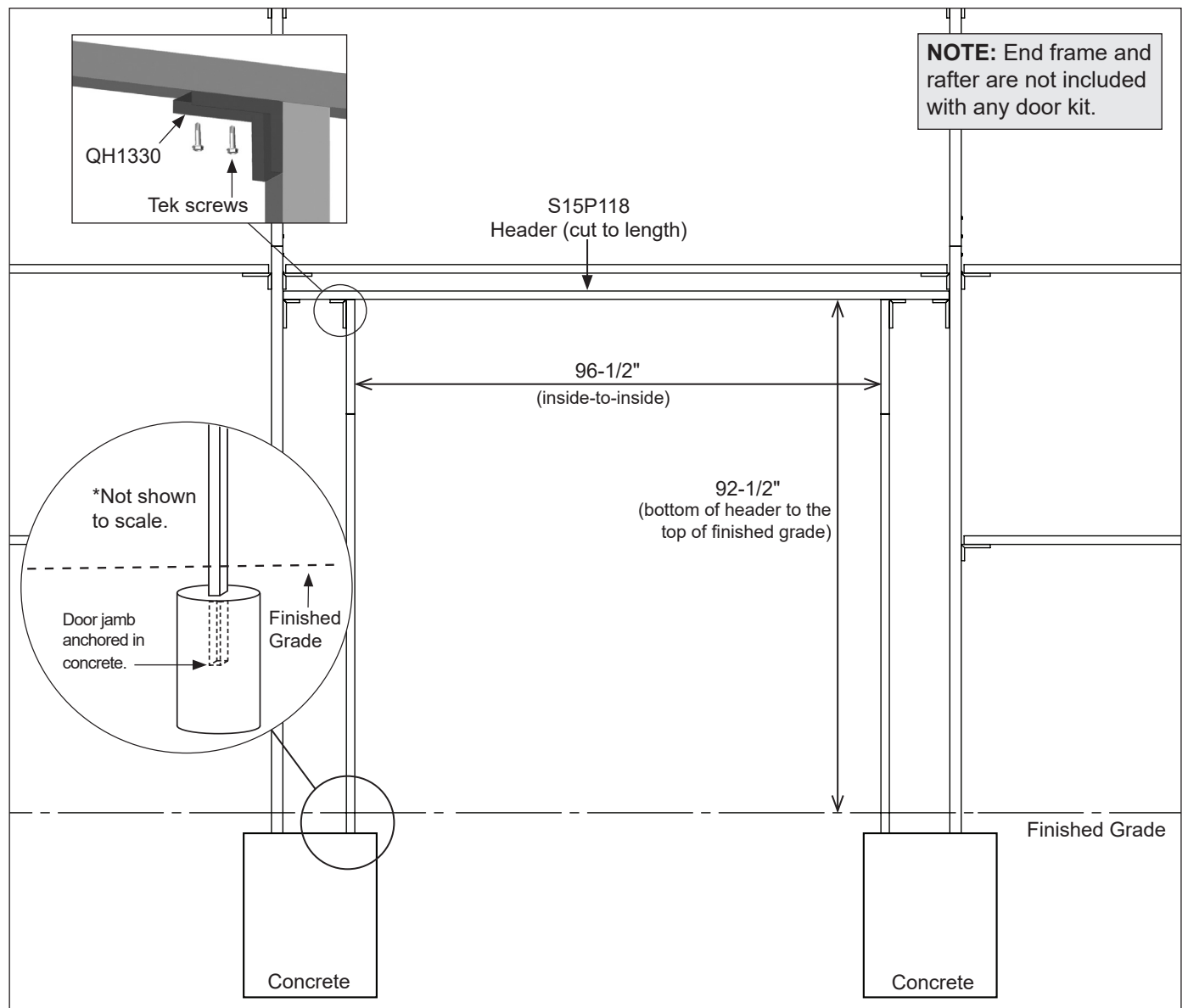
QH1330
Angled Bracket

Door Frame Assembly

ASSEMBLING THE DOOR FRAME COMPONENTS

Consult the diagrams at the back of these instructions *before* you begin. Assistance is required to assemble the door frame and door. The following steps describe one way to assemble the door frame and door.

1. Using the dimensions on the Door Frame Layout diagram (Quick Start Section), determine the positions of the doorjamb.
2. Dig 8"-10" diameter holes at the locations found in previous step to a depth that is *below the geographic frost line*. Minimum depth: 24".
3. Using the rough door opening dimensions and the door frame components, assemble and install the door frame. See diagram below.
4. Square door frame and secure doorjamb in holes using concrete. Verify door frame dimensions before you secure jambs in concrete. Doorjamb must be plumb for proper door operation.
5. Once door frame is attached to end wall framing, assemble the door. Consult the procedures on the next few pages for your door (twin wall or corrugated polycarbonate).



Twin-Wall Double Swinging Doors

DOUBLE TWIN-WALL DOOR ASSEMBLY

If your doors include corrugated polycarbonate panels, skip this section and continue with the assembly steps for those doors. The materials and parts needed to assemble the double door include:

- Door frames (102923), 8mm panels (116049), door hinges (FA5030), end cap (104548), and latches (FA2410)
- Tek screws (FA4484B), neo-bonded washers (102921B), and aluminum profile (104213)

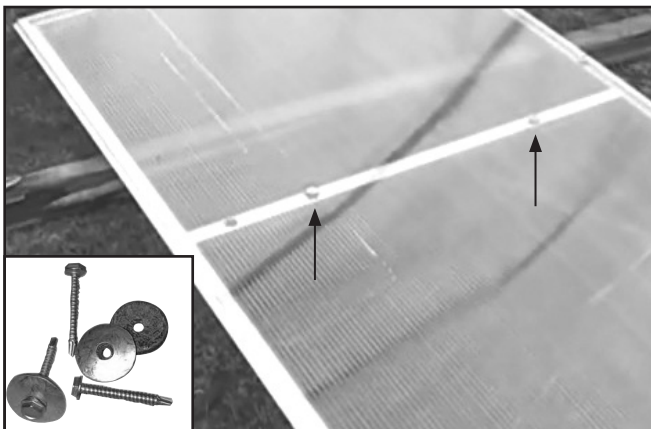
Assemble and Attach Door

NOTE: Install polycarbonate panel with UV-protected side toward the outside/sun.

1. Locate door frame (102923), assemble (if needed), and place on a flat surface.
2. Take polycarbonate panel and trim it so length is one-quarter inch (1/4") shorter than length of door frame.
3. Trim width of panel (if needed) so it is one-quarter inch (1/4") narrower than width of door frame.

NOTE: Trimming panels as instructed will keep panel away from door frame edges *once aluminum profile (104213) is installed.*

4. Center panel on door frame.
5. Using Tek screws (FA4484B) and galvanized neo-bonded washers, attach panel to horizontal cross tube. *Evenly space Tek screws and washers every 12".*



NOTE: Attach panel in locations shown in photo to hold in place while attaching aluminum profile to perimeter of panel. **DO NOT INSTALL NEAR LATCH MOUNTING HOLE.**

6. Install aluminum U-channel profile to all edges of panel. The 104213 sections at top and bottom of panel run to panel edges to seal panel cells.

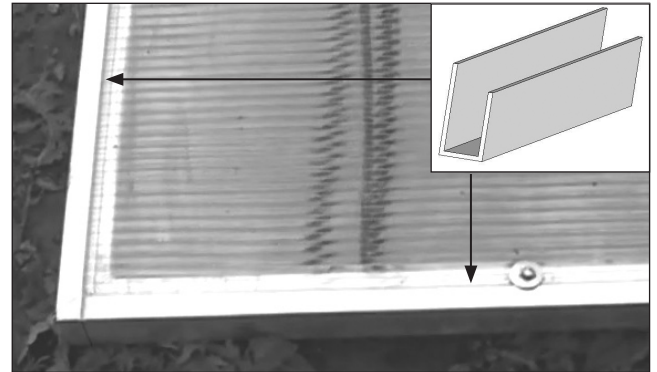


Photo shows panel attached to the outside of door frame and finished with aluminum (104213) U-channel profile.

7. To keep panel and profile in place, install Tek screws and neo-bonded galvanized washers so screw drills through longer edge of U-channel (underside of panel) and washer overlaps shorter edge of U-channel (top) as shown above. *Evenly space Tek screws every 12".*
8. Repeat above steps to attach panel and to install aluminum profile for remaining door frame.
9. After assembling doors, evenly space three (3) hinges along door frame of each door and attach hinges to using Tek screws.



NOTE: Photo shows hinge attached to door frame over polycarbonate panel using FA4484B screws.

Twin-Wall Double Swinging Doors

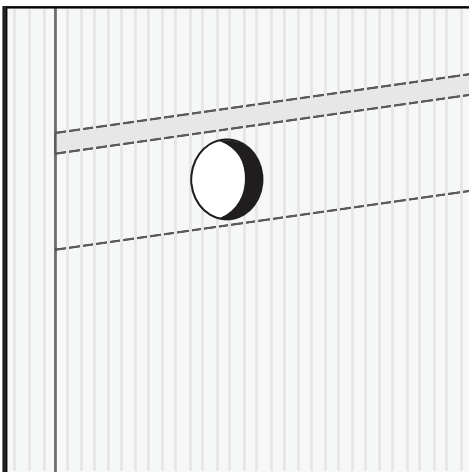
DOUBLE TWIN-WALL DOOR ASSEMBLY (continued)

10. With assistance, set the assembled doors in the end wall door frame and secure hinges to the door jamb using one Tek screw per hinge at this time.

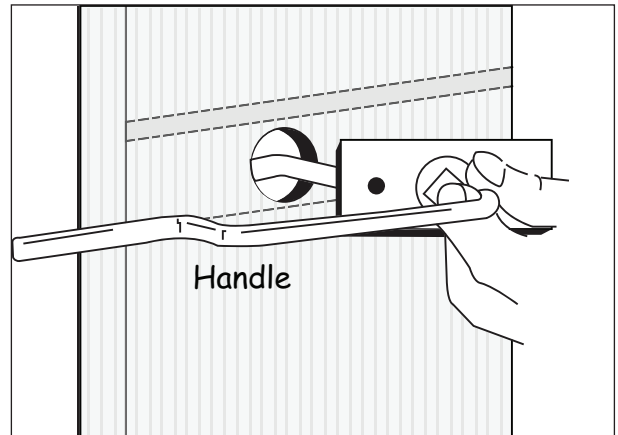


Locations of door hinges may vary.

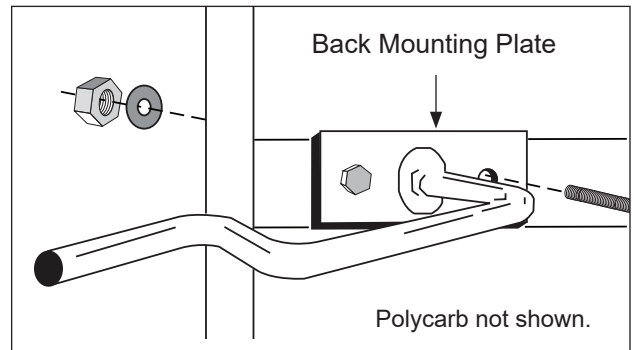
- NOTE:** Verify that there is sufficient clearance along all door edges to allow the doors to swing freely in the opening. If end panels are installed, attach to the outside of the end panels as shown above.
11. Test the door operation, adjust hinges as needed, and install the remaining Tek screws to secure hinges to the doorjamb.
12. Determine which door to install the handle, locate the door latch hole in the door cross member and drill 1" hole through the polycarbonate panel at the hole location.



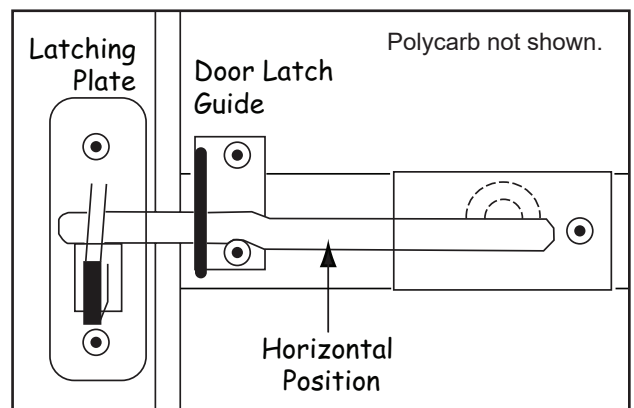
13. Place main handle of assembly through hole in door and twist main handle and front plate into place.



14. Mark mounting hole locations on the panel and drill a 5/16" hole through the panel and door frame.



15. Slide back mounting plate into position, square it with the mounting holes and front plate and secure using two (2) 1/4" x 3" bolts and lock nuts. Verify that latch moves freely.

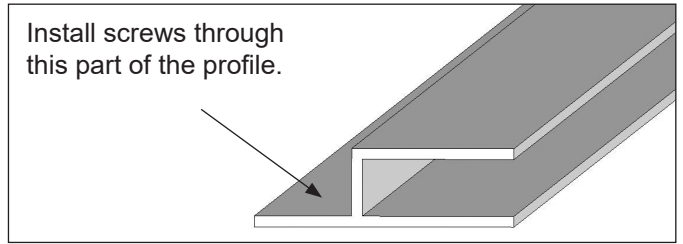
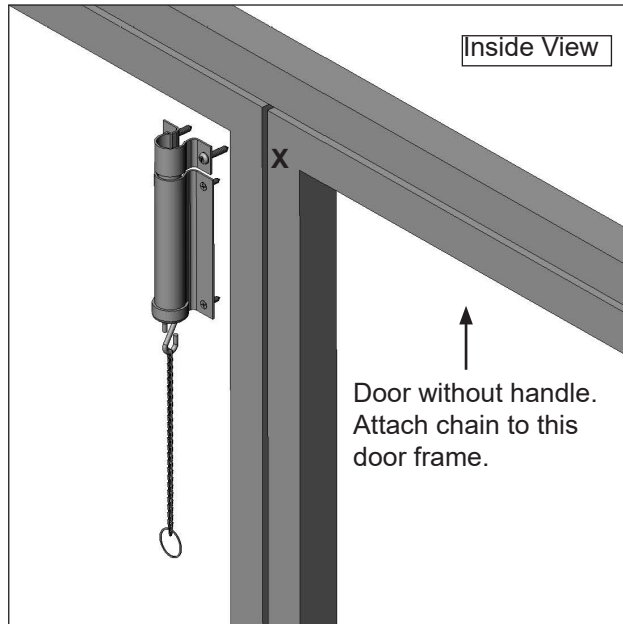


16. Attach door latch guide using the remaining 1/4" x 3" bolts. Position so latch handle is level. See above.
17. Attach the latching plate to the other door frame using the installed handle as a guide.

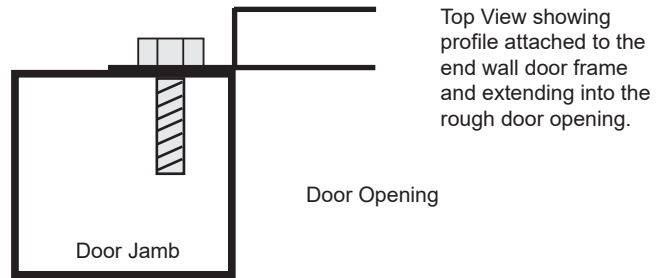
Twin-Wall Double Swinging Doors

DOUBLE TWIN-WALL DOOR ASSEMBLY (continued)

18. Attach the 6" chain bolt to the inside, upper corner of the *door without the handle*. (See X in drawing below for location.)



End cap used for door stop and seal. See Steps 19-20.



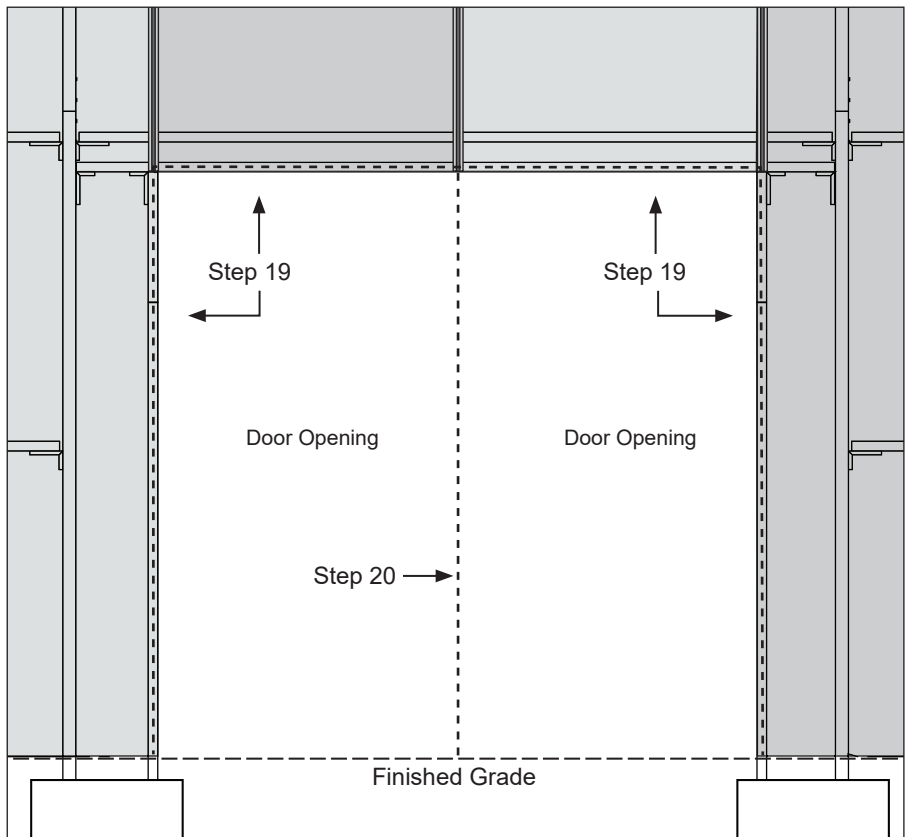
19. At the top and sides of the end wall door opening on the inside of the frame, attach end cap and allow it to extend below and into the door frame opening. Dashed line in the diagram below identifies where to attach the end cap profile. End cap extends beyond the frame members and into the rough opening to stop the door in the frame and to help seal the gap between the door and frame. See Top View diagram above.

ATTENTION: This profile acts as a stop for the double doors, which prevents undo stress on the hinges. Consult the photos to the right.

20. After end cap profile is installed, install another section of the same end cap on the ***inside frame of the door that includes the chain latch***.

NOTE: This end cap serves as a stop for the other door of the double assembly when both doors are closed.

21. Check the operation of the latches and the doors.
22. After installing the door to the frame, read the care and maintenance section.



Corrugated Double Swinging Doors

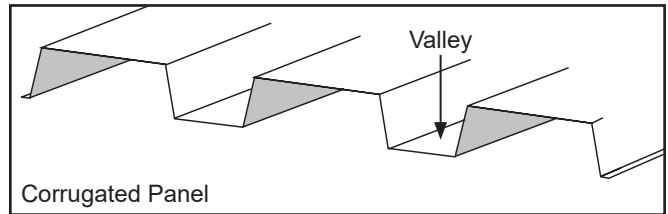
DOUBLE CORRUGATED DOOR ASSEMBLY

If your doors includes 8mm twin-wall polycarbonate, skip this section and continue with the assembly steps for that door. The materials and parts needed to assemble the double door include:

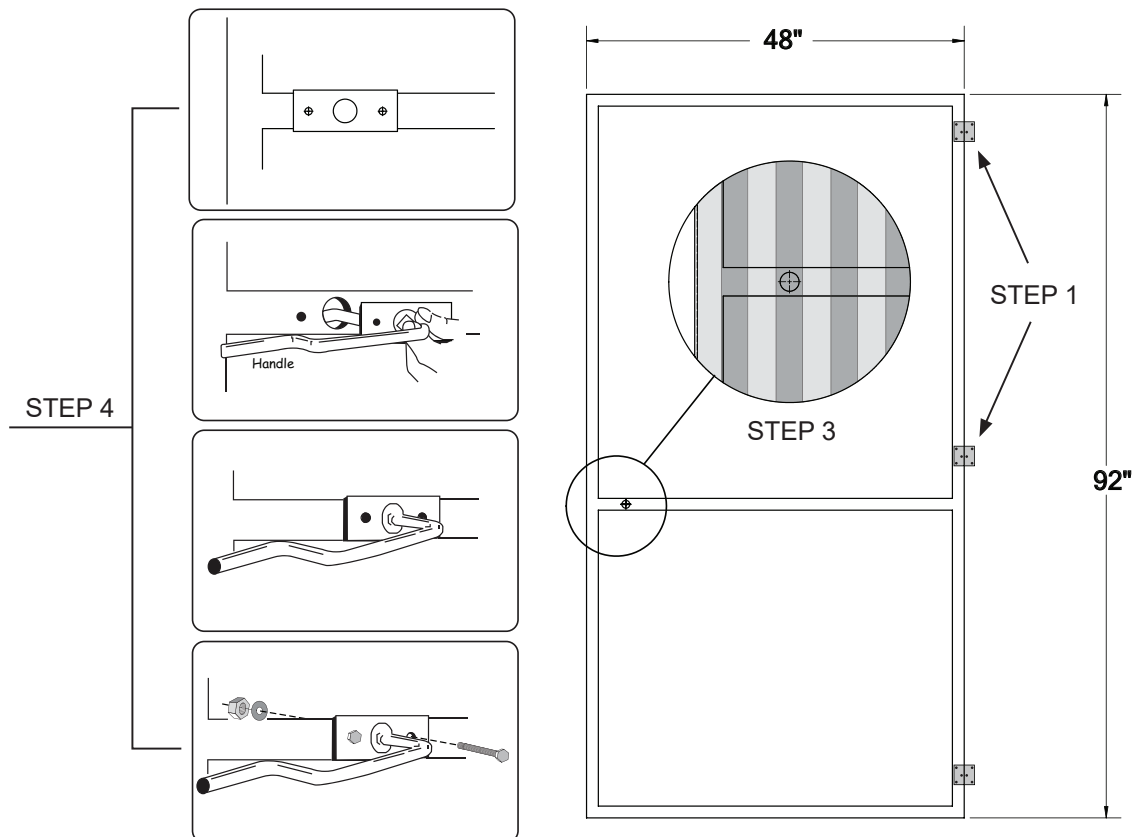
- Door frames (#102923), corrugated panels (104620C), door hinges (FA5030), end cap (104548) and latches (FA2410)
- Tek screws (#FA4482B), neo-bonded washers (#102921B), and foam closure strips (104709)

Assemble and Attach Door

1. Assemble door frame (#102923), place it on a flat surface, and attach three (3) hinges (FA5030) using Tek screws. Evenly space hinges along side of the frame. See diagram below.
2. Select the corrugated panel (104620C) and trim it so that the length is approximately one-quarter inch (1/4") shorter than the length of the door frame. (This helps protect the edges of the polycarbonate panel.)
3. Position the panel on the door frame so that a panel valley is placed over (or near) the door latch hole of the frame as shown below. (Trim panel width—both edges if necessary—to align valley with door latch hole.) Mark the door latch hole position on the corrugated panel, drill a 3/4" hole in the panel at that mark, set the panel aside, and install the door latch as described in the diagram below and in the following step.
4. Center the latch mounting plate over the door frame hole, mark the bolt holes, and drill two 5/16" holes through frame. With assistance, slide the latch and mounting plate assembly through the front side of the door frame, add the mounting plate on the back side, and secure using two (2) 1/4" x 3" bolts. Verify that latch turns freely.
5. Reposition the polycarbonate panel on the door frame by threading the latch through the hole drilled in the panel (Step 3). Square panel on the frame as needed.



NOTE: Verify that the horizontal closure strip under the panel is in place *before* attaching the panel to the door frame. *Read the notice on the corrugated panel to install the panel correctly.*



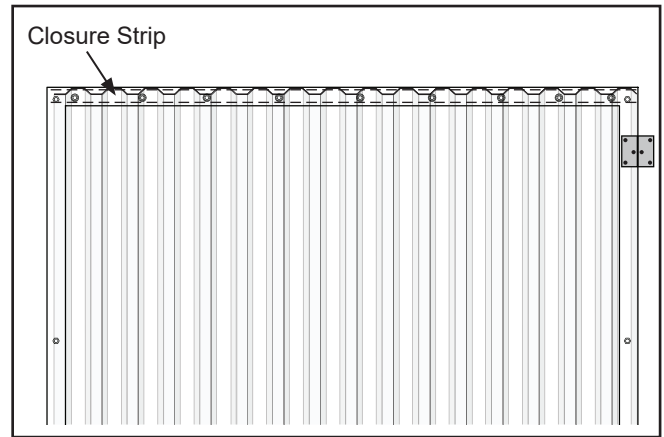
Corrugated Double Swinging Doors

DOUBLE CORRUGATED DOOR ASSEMBLY (continued)

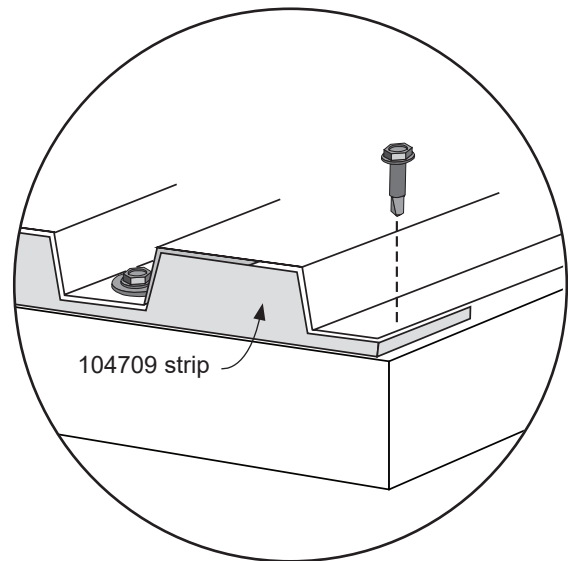
6. Install sections of the horizontal closure strips (104709) under the panel *before* attaching the panel to the door frame. *Trim closure strips as needed.*
7. Drive Tek screws and washers through the panel, closure strip, and into the frame every 6" or so. *Install Tek screws and washers in the valleys of the panel. Screws should be snug. Do not overtighten screws.*
8. Attach the panel in the locations as shown to hold the panel in place. If needed, secure the sides of the polycarbonate panel to the door frame using Tek screws only every 16".
9. Attach the *door latch guide* to the door frame using the remaining 1/4" bolts. *Trim the edge of the corrugated panel as needed to allow free movement of latch.*
10. Repeat the required steps needed to assemble the remaining door frame and installation of the panel.
11. With assistance, set the assembled doors in the end wall door frame and secure hinges to the door jamb using *one Tek screw per hinge at this time.*

NOTE: Verify that there is sufficient clearance along all door edges to allow the doors to swing freely in the opening. *If end panels are installed, loosen the panels, secure the hinges directly to the door jamb, and reinstall panel fasteners.*

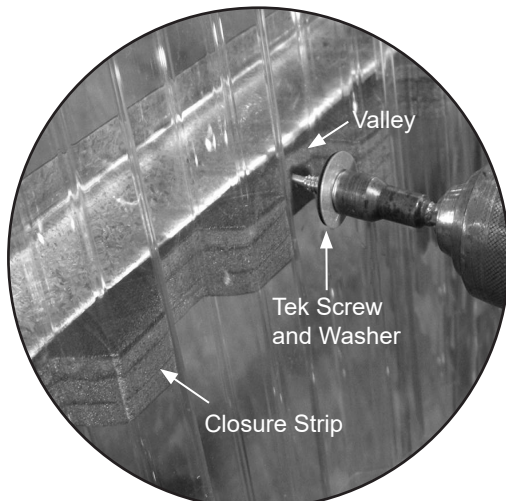
12. Test the operation of the doors, adjust hinges as needed, and install the remaining Tek screws to secure hinges.



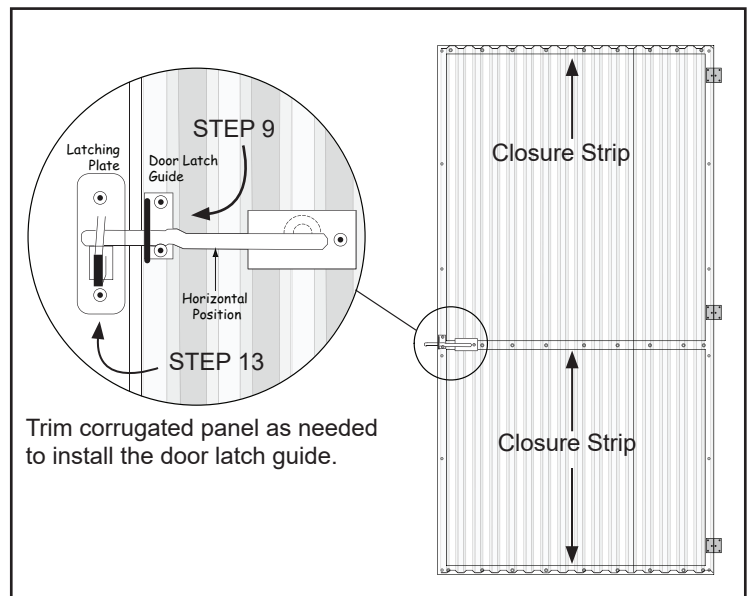
STEP 7



STEP 8



STEP 6



Trim corrugated panel as needed to install the door latch guide.

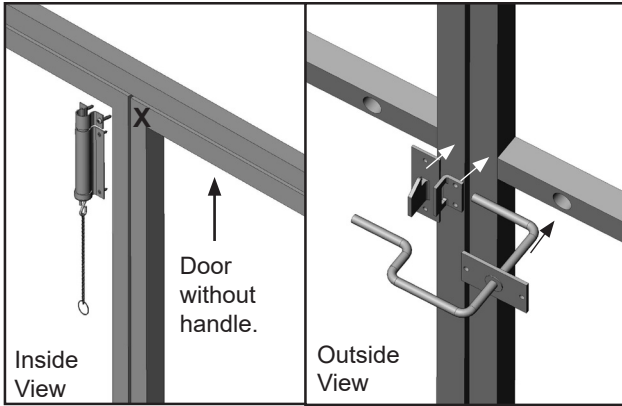
STEP 11

Corrugated Double Swinging Doors

DOUBLE CORRUGATED DOOR ASSEMBLY (continued)

13. Attach the 6" chain bolt to the inside, upper corner of the door without the handle (see X in drawing below).

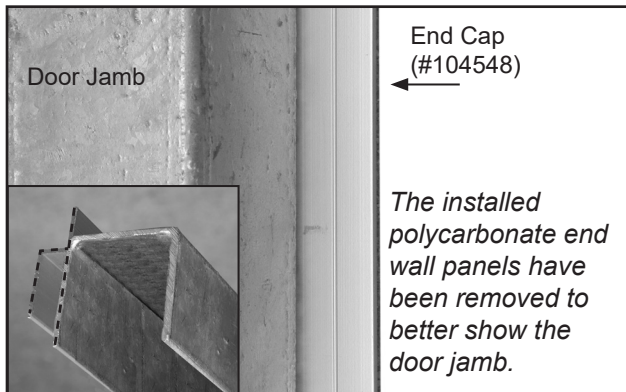
Mount the latching plate to the outside of the same door (see drawing in step 12). The screws supplied with the latch are not used for metal jambs.



ATTENTION: This profile acts as a stop for the double doors, which prevents undo stress on the hinges.

- Photos show the end cap as attached to the end wall door jamb. View shows the assembly from the outside.
- Cross section insert shows the end cap (dashed line) attached to the inside/back of the door jamb.
- Dashed line below identifies where to attach the end cap profile. The end cap extends beyond the frame members and into the rough opening to stop the door in the frame and to help seal the gap between the door and frame.

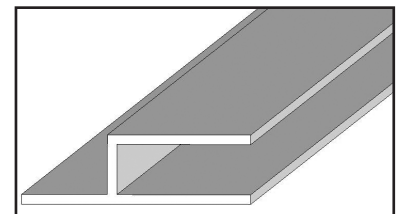
14. At the top and sides of the end wall door opening on the inside of the frame, attach end cap and allow it to extend below and into the door frame opening. Consult the photos below.



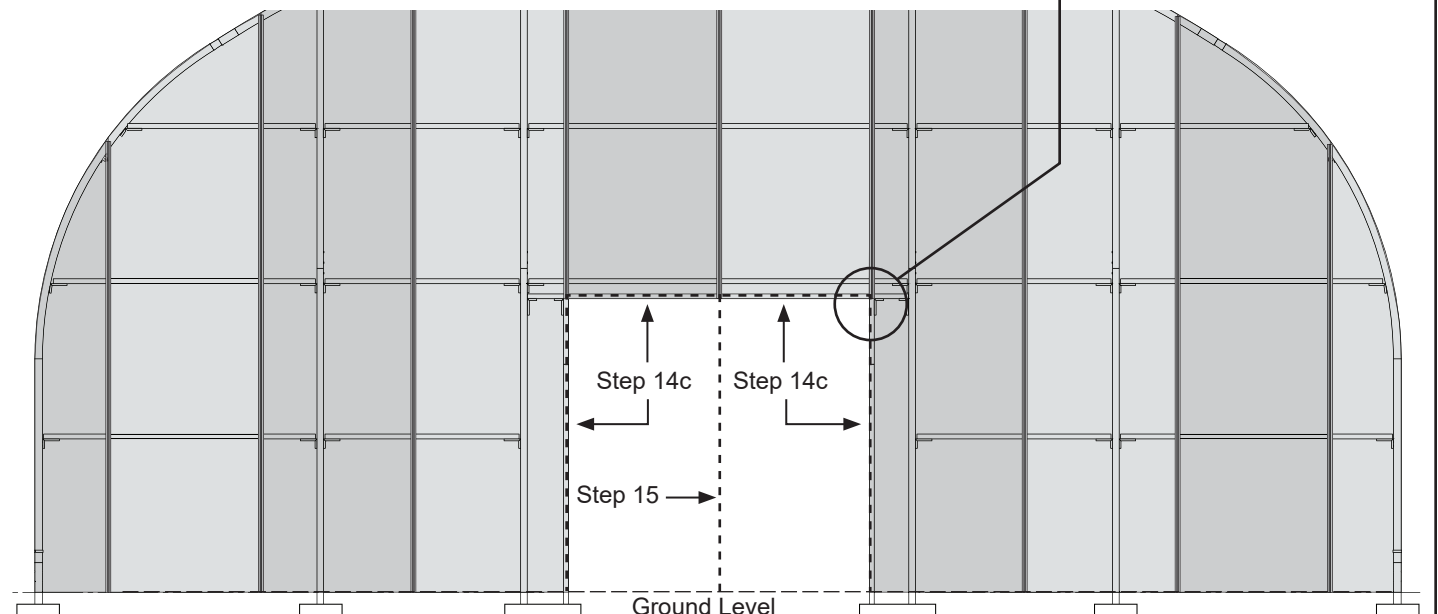
15. After end cap profile is installed, install another section of the same end cap on the inside frame of the door that includes the chain latch.

NOTE: This length of end cap will act as a stop for the remaining door of the double door assembly when both doors are closed.

- Check the operation of the latches and the doors.
- After installing the door to the frame, read the care and maintenance section.



End cap used for door stop and seal.



Shelter Care and Maintenance

SHELTER CARE AND MAINTENANCE

Proper care and maintenance of the doors is important. Check the following items periodically to properly maintain the doors and door frame:

- Regularly check the polycarbonate panels to see that they remain secure and in good condition. Replace damaged panels if needed.
- Check connections and all fasteners to verify that they remain tight.
- Check the contents of the shelter to verify that nothing is touching the polycarbonate panels that could cause damage or interfere with the door operation.
- ***Do not leave the doors ajar. Close doors and secure with latch or prop doors open to avoid personal injury or damage to the doors.***
- For replacement or missing parts, contact you sales representative for assistance.



Space below is reserved for customer notes.

Quick Start Guide

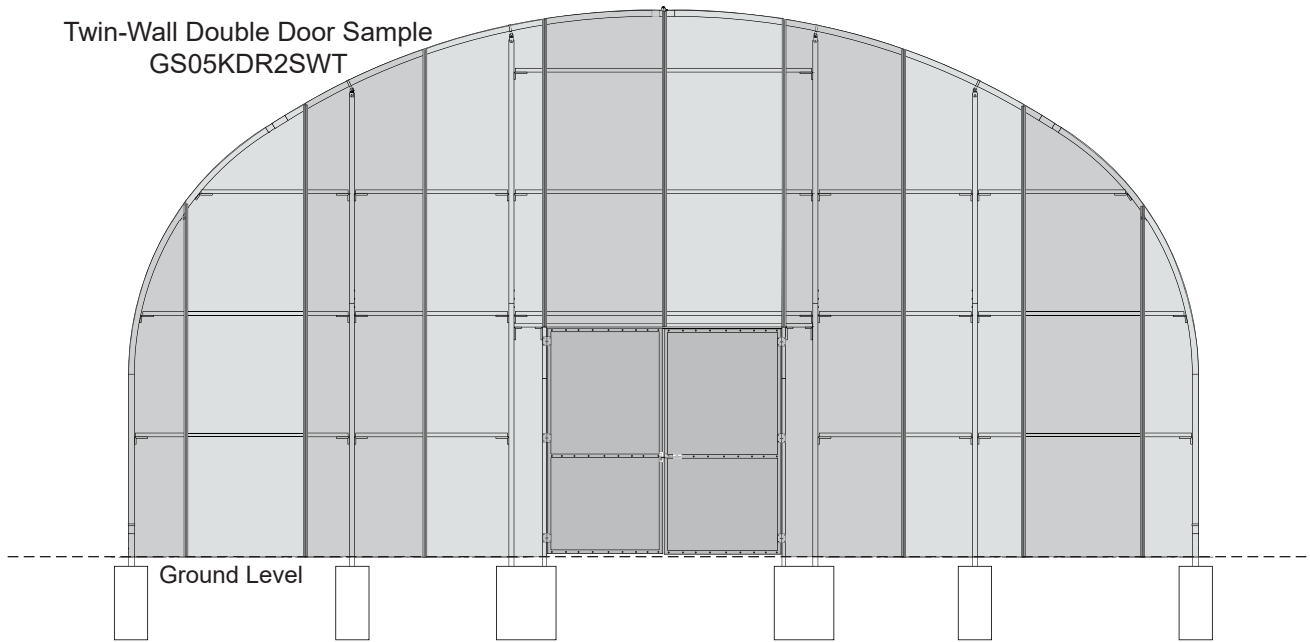


QUICK START GUIDE

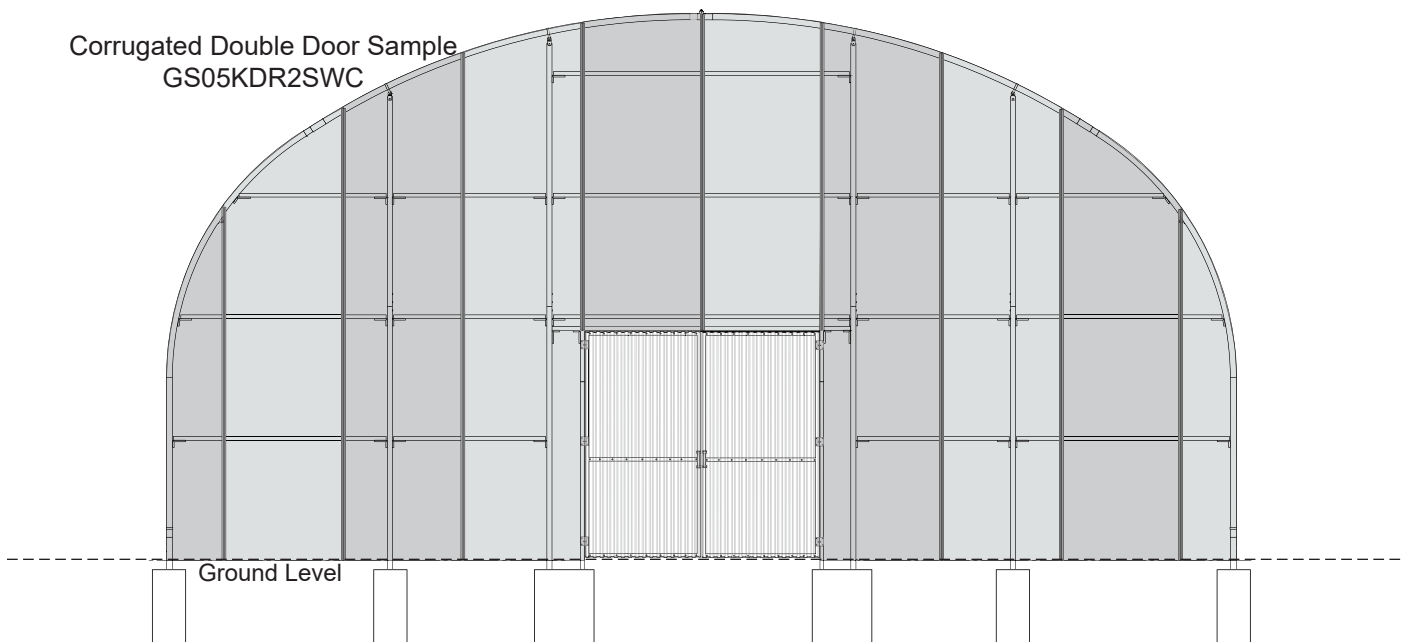
Double Swinging Door Kit (GS05KDR2SWT and GS05KDR2SWC)

ATTENTION: End frame and end rafter are not included with any door kit. Actual width of the building end wall may differ.

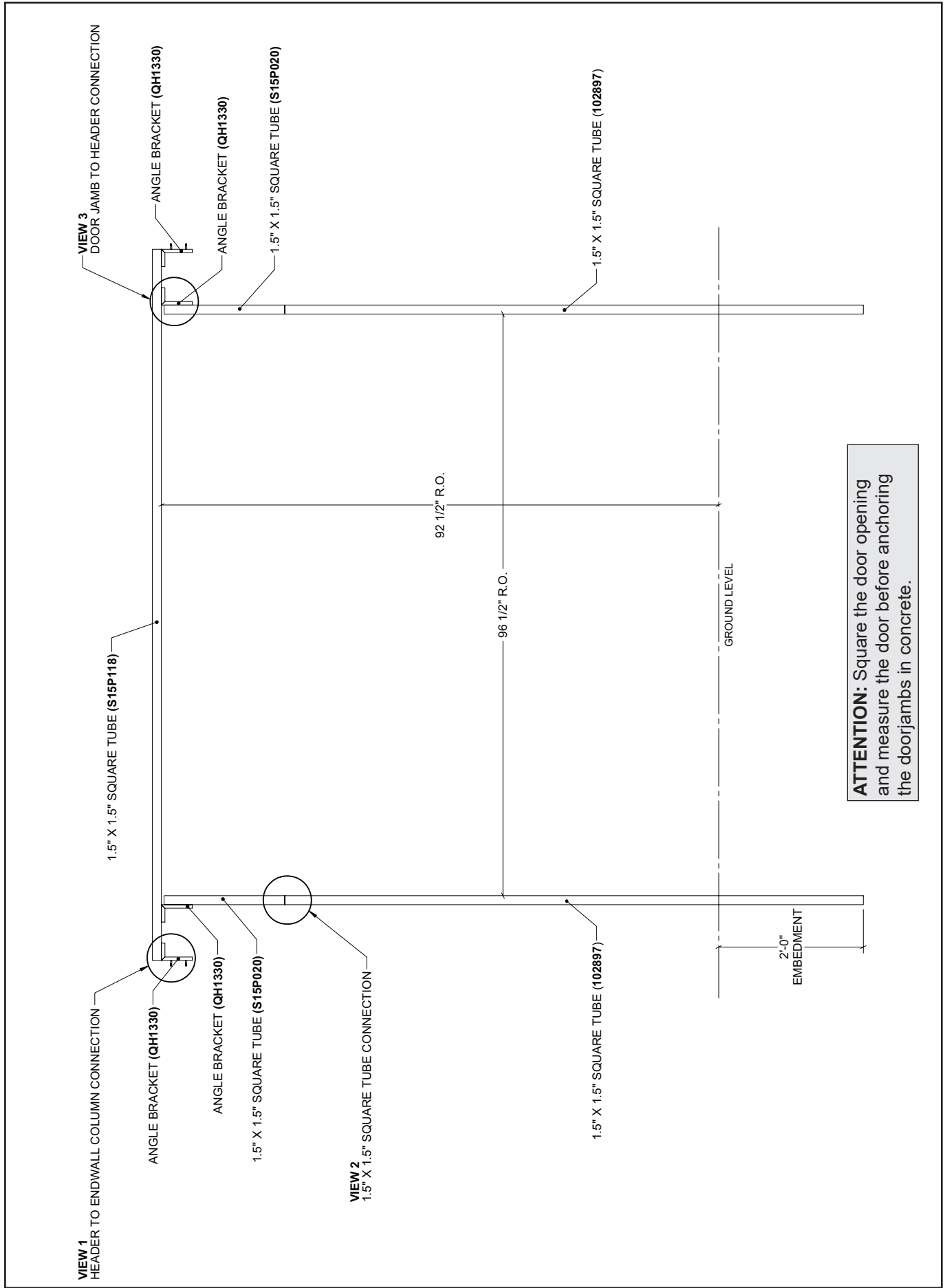
Twin-Wall Double Door Sample
GS05KDR2SWT



Corrugated Double Door Sample
GS05KDR2SWC

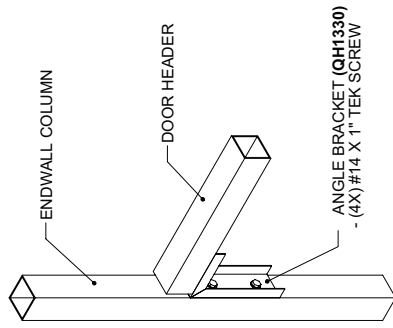


Door Frame Layout

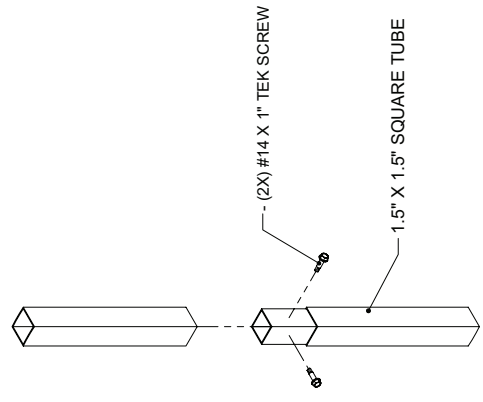


ATTENTION: Square the door opening and measure the door before anchoring the doorjamb in concrete.

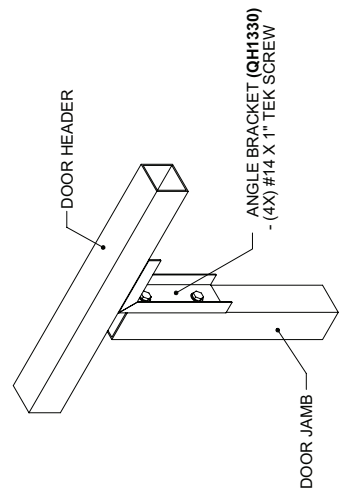
Door Frame Detail Connections



VIEW 1
ADER TO ENDWALL COLUMN CONNECTION



VIEW 2
1.5" X 1.5" SQUARE TUBE CONNECTION



VIEW 3
DOOR JAMB TO HEADER CONNECTION

ATTENTION: Install screws in a location that will not interfere with the installation of the door assembly.